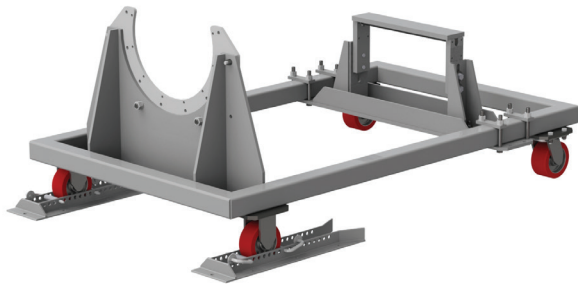


# Wheeled Engine Cart System

## 28" (711mm) Centerline Height



1034115 - Wheeled Engine Cart System shown

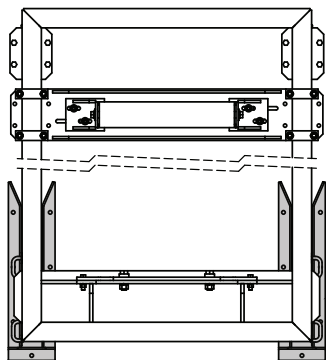
### Overview

Power Test Wheeled Engine Cart system provides a stable, portable platform for quick placement of an engine in preparation for testing.

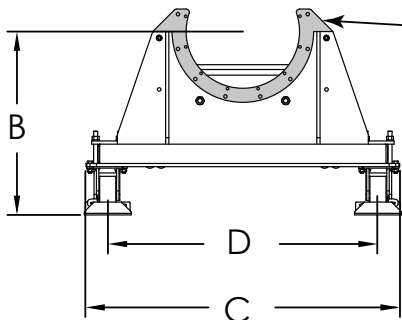
Wheeled Engine Cart System:

- Includes cart guide angles, a universal front support (UFS), and flywheel housing adapters
- Feature heavy duty structural steel frames
- Are equipped with polyurethane wheeled swivel casters that protect shop floors and help minimize vibrations

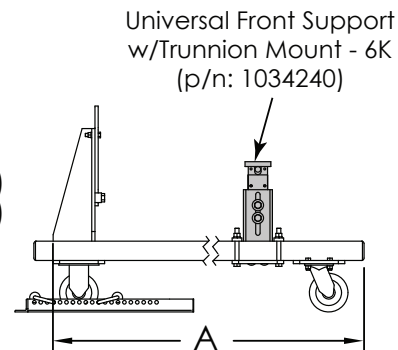
Wheeled Engine Carts are used in conjunction with Power Test cart guide angles, a universal front support (UFS), and flywheel housing adapters to maintain correct engine centerline height relative to the dynamometer in the test cell, allowing one cart to be used for testing a wide range of engine displacements.



Engine Cart Guide Angles (p/n: 1026888.2)



Flywheel Housing Adapters  
SAE "1" & "2" (p/n: 43674)  
SAE "3" & "4" (p/n: 43675)



Universal Front Support w/Trunnion Mount - 6K (p/n: 1034240)

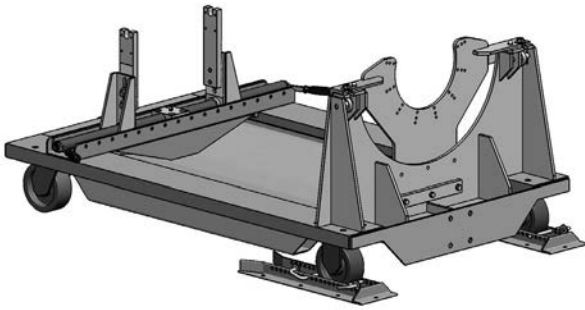
Description	Part #	Dimensions - inches (mm)				Capacity lbs (kg)	Weight lbs (kg)
		A	B	C	D		
Engine Cart System 28CL	1034115	73 (1854)	28 1/2 (724)	48 3/4 (1238)	42 (1067)	6,000 (2722)	710 (322)



N60 W22700 Silver Spring Drive • Sussex, WI 53089 USA  
phone: (262) 252-4301 • fax: (262) 246-0436  
www.powertestdyno.com

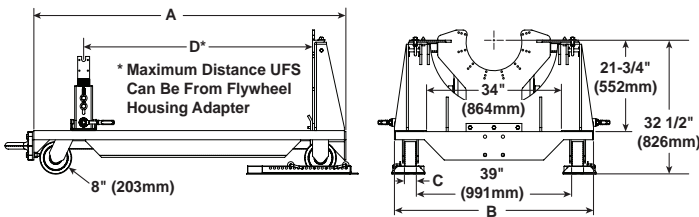
# Wheeled Engine Cart

## 32" (813mm) Centerline Height



63491.120 - 20K 32-inch Centerline Engine Cart shown

Engine Cart shown with optional Drain Pan, Wheel Guide Angles, Flywheel Housing Adapter, and Universal Front Support. All optional items to be sold separately.



### Overview

Power Test Wheeled Engine Carts provide a stable, portable platform for quick placement of an engine in preparation for testing.

Wheeled Engine Carts:

- Feature heavy duty structural steel frames
- Are equipped with polyurethane wheeled swivel casters that protect shop floors and help minimize vibrations
- Are available in a variety of lengths and capacities

Wheeled Engine Carts are used in conjunction with Power Test cart guide angles, a universal front support (UFS), and flywheel housing adapters to maintain correct engine centerline height relative to the dynamometer in the test cell, allowing one cart to be used for testing a wide range of engine displacements.

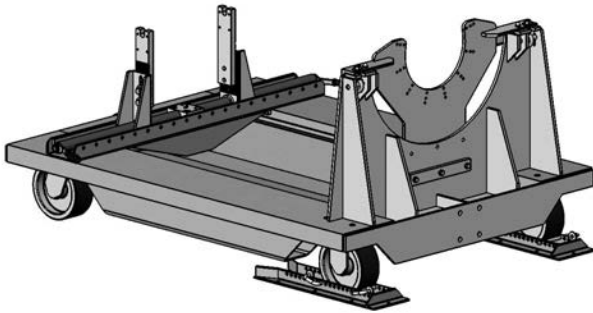
Description	Part #	Dimensions - inches (mm)				Capacity lbs (kg)	Weight lbs (kg)
		A	B	C	D		
Engine Cart 10K 78" L	63491.078	78 3/4 (2000)	50 (1270)	3 (76)	58 1/4 (1480)	10,000 (4536)	774 (351)
Engine Cart 10K 96" L	63491.096	96 3/4 (2457)	50 (1270)	3 (76)	76 1/4 (1937)	10,000 (4536)	855 (388)
Engine Cart 10K 120" L	63491.120	121 (3073)	50 (1270)	3 (76)	100 1/4 (2546)	10,000 (4536)	963 (437)
Engine Cart 20K 96" L	63492.096	96 3/4 (2457)	58 (1473)	4 (102)	76 1/4 (1937)	20,000 (9072)	1,281 (581)
Engine Cart 20K 120" L	63492.120	121 (3073)	58 (1473)	4 (102)	100 1/4 (2546)	20,000 (9072)	1,493 (677)
Engine Cart 20K 136" L	63492.136	137 (3480)	58 (1473)	4 (102)	116 1/4 (2953)	20,000 (9072)	1,565 (710)
Engine Cart 30K 136" L	63493.136	137 (3480)	64 (1626)	9 (229)	116 1/4 (2953)	30,000 (13608)	2,031 (921)
Engine Cart 30K 148" L	63493.148	149 (3785)	64 (1626)	9 (229)	128 1/4 (3257)	30,000 (13608)	2,085 (946)



N60 W22700 Silver Spring Drive • Sussex, WI 53089 USA  
 phone: (262) 252-4301 • fax: (262) 246-0436  
[www.pwrst.com](http://www.pwrst.com)

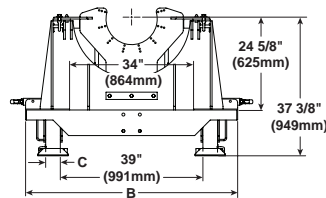
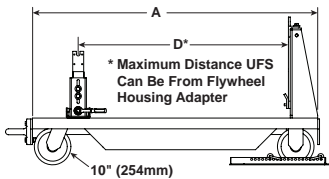
# Wheeled Engine Cart

## 38" (965mm) Centerline Height



63502.120- 20K 120" L 38-inch Centerline Engine Cart shown

Engine Cart shown with optional Drain Pan, Wheel Guide Angles, Flywheel Housing Adapter, and Universal Front Support. All optional items to be sold separately.



### Overview

Power Test Wheeled Engine Carts provide a stable, portable platform for quick placement of an engine in preparation for testing.

Wheeled Engine Carts:

- Feature heavy duty structural steel frames
- Are equipped with polyurethane wheeled swivel casters that protect shop floors and help minimize vibrations
- Are available in a variety of lengths and capacities

Wheeled Engine Carts are used in conjunction with Power Test cart guide angles, a universal front support (UFS), and flywheel housing adapters to maintain correct engine centerline height relative to the dynamometer in the test cell, allowing one cart to be used for testing a wide range of engine displacements.

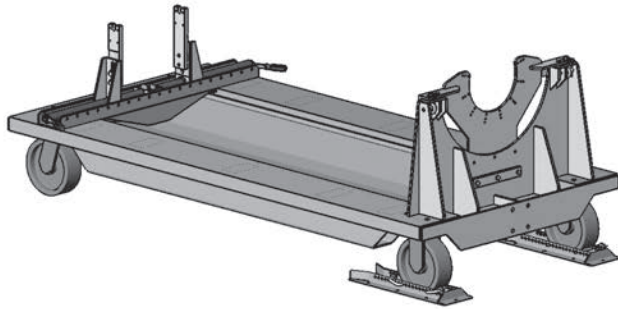
Description	Part #	Dimensions - inches (mm)				Capacity lbs (kg)	Weight lbs (kg)
		A	B	C	D		
Engine Cart 10K 78" L	63501.078	78 3/4 (2000)	50 (1270)	3 (76)	58 1/4 (1480)	10,000 (4536)	831 (377)
Engine Cart 10K 96" L	63501.096	96 3/4 (2457)	50 (1270)	3 (76)	76 1/4 (1937)	10,000 (4536)	913 (414)
Engine Cart 10K 120" L	63501.120	121 (3073)	50 (1270)	3 (76)	100 1/4 (2546)	10,000 (4536)	1,021 (463)
Engine Cart 20K 96" L	63502.096	96 3/4 (2457)	58 (1473)	4 (102)	76 1/4 (1937)	20,000 (9072)	1,377 (625)
Engine Cart 20K 120" L	63502.120	121 (3073)	58 (1473)	4 (102)	100 1/4 (2546)	20,000 (9072)	1,558 (707)
Engine Cart 20K 136" L	63502.136	137 (3480)	58 (1473)	4 (102)	116 1/4 (2953)	20,000 (9072)	1,630 (740)
Engine Cart 30K 136" L	63503.136	137 (3480)	64 (1626)	9 (229)	116 1/4 (2953)	30,000 (13608)	1,855 (842)
Engine Cart 30K 148" L	63503.148	149 (3785)	64 (1626)	9 (229)	129 1/4 (3283)	30,000 (13608)	2,290 (1039)
Engine Cart 30K 172" L	63503.172	173 (4394)	64 (1626)	9 (229)	153 1/4 (3892)	30,000 (13608)	2,725 (1237)



N60 W22700 Silver Spring Drive • Sussex, WI 53089 USA  
 phone: (262) 252-4301 • fax: (262) 246-0436  
[www.pwrst.com](http://www.pwrst.com)

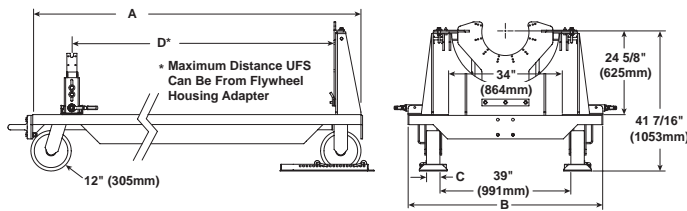
# Wheeled Engine Cart

## 42" (1067mm) Centerline Height



63706.120- 20K 120" L 42-inch Centerline Engine Cart shown

Engine Cart shown with optional Drain Pan, Wheel Guide Angles, Flywheel Housing Adapter, and Universal Front Support. All optional items to be sold separately.



### Overview

Power Test Wheeled Engine Carts provide a stable, portable platform for quick placement of an engine in preparation for testing.

Wheeled Engine Carts:

- Feature heavy duty structural steel frames
- Are equipped with polyurethane wheeled swivel casters that protect shop floors and help minimize vibrations
- Are available in a variety of lengths and capacities

Wheeled Engine Carts are used in conjunction with Power Test cart guide angles, a universal front support (UFS), and flywheel housing adapters to maintain correct engine centerline height relative to the dynamometer in the test cell, allowing one cart to be used for testing a wide range of engine displacements.

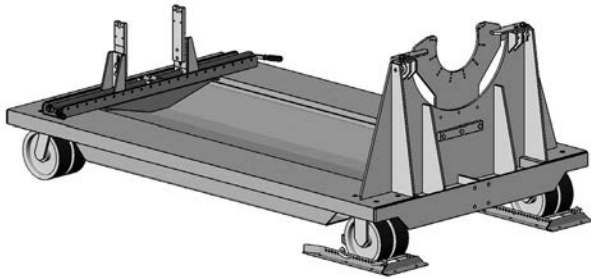
Description	Part #	Dimensions - inches (mm)				Capacity lbs (kg)	Weight lbs (kg)
		A	B	C	D		
Engine Cart 10K 78" L	63777.078	78 3/4 (2000)	50 (1270)	3 (76)	58 1/4 (1480)	10,000 (4536)	927 (421)
Engine Cart 10K 96" L	63777.096	96 3/4 (2457)	50 (1270)	3 (76)	76 1/4 (1937)	10,000 (4536)	1,008 (458)
Engine Cart 10K 120" L	63777.120	121 (3073)	50 (1270)	3 (76)	100 1/4 (2546)	10,000 (4536)	1,116 (507)
Engine Cart 20K 96" L	63706.096	96 3/4 (2457)	58 (1473)	4 (102)	76 1/4 (1937)	20,000 (9072)	1,436 (652)
Engine Cart 20K 120" L	63706.120	121 (3073)	58 (1473)	4 (102)	100 1/4 (2546)	20,000 (9072)	1,648 (748)
Engine Cart 20K 136" L	63706.136	137 (3480)	58 (1473)	4 (102)	116 1/4 (2953)	20,000 (9072)	1,790 (812)
Engine Cart 30K 136" L	63767.136	137 (3480)	64 (1626)	9 (229)	116 1/4 (2953)	30,000 (13608)	2,315 (1051)
Engine Cart 30K 148" L	63767.148	149 (3785)	64 (1626)	9 (229)	129 1/4 (3283)	30,000 (13608)	2,457 (1115)
Engine Cart 30K 172" L	63767.172	173 (4394)	64 (1626)	9 (229)	153 1/4 (3892)	30,000 (13608)	2,720 (1234)



N60 W22700 Silver Spring Drive • Sussex, WI 53089 USA  
 phone: (262) 252-4301 • fax: (262) 246-0436  
[www.pwrst.com](http://www.pwrst.com)

# Wheeled Engine Cart

## 48" (1219mm) Centerline Height



63559.148 - 30K 48-inch Centerline Engine Cart shown

Engine Cart shown with optional Drain Pan, Wheel Guide Angles, Flywheel Housing Adapter, and Universal Front Support. All optional items to be sold separately.

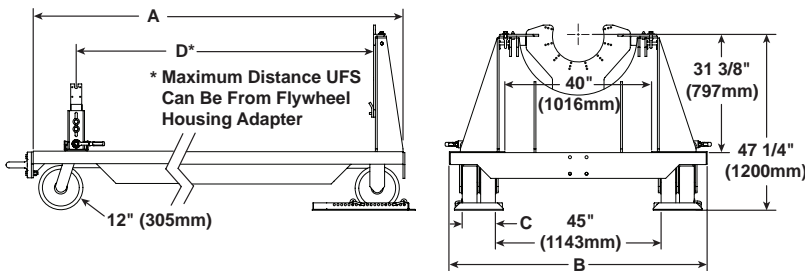
### Overview

Power Test Wheeled Engine Carts provide a stable, portable platform for quick placement of an engine in preparation for testing.

Wheeled Engine Carts:

- Feature heavy duty structural steel frames
- Are equipped with polyurethane wheeled swivel casters that protect shop floors and help minimize vibrations
- Are available in a variety of lengths and capacities

Wheeled Engine Carts are used in conjunction with Power Test cart guide angles, a universal front support (UFS), and flywheel housing adapters to maintain correct engine centerline height relative to the dynamometer in the test cell, allowing one cart to be used for testing a wide range of engine displacements.

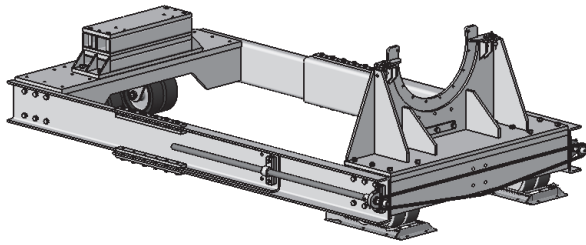


Description	Part #	Dimensions - inches (mm)				Capacity lbs (kg)	Weight lbs (kg)
		A	B	C	D		
Engine Cart 20K 96" Length	63558.096	97 (2464)	64 (1626)	4 (102)	76 1/4 (1937)	20,000 (9072)	1,592 (722)
Engine Cart 20K 120" Length	63558.120	121 (3073)	64 (1626)	4 (102)	100 1/4 (2546)	20,000 (9072)	1,700 (771)
Engine Cart 20K 136" Length	63558.136	137 (3480)	64 (1626)	4 (102)	116 1/4 (2953)	20,000 (9072)	1,842 (836)
Engine Cart 30K 136" Length	63559.136	137 (3480)	70 (1778)	9 (229)	116 1/4 (2953)	30,000 (13608)	2,220 (1007)
Engine Cart 30K 148" Length	63559.148	149 (3785)	70 (1778)	9 (229)	128 1/4 (3257)	30,000 (13608)	2,346 (1064)
Engine Cart 30K 172" Length	63559.172	173 (4394)	70 (1778)	9 (229)	152 1/4 (3867)	30,000 (13608)	2,940 (1334)



N60 W22700 Silver Spring Drive • Sussex, WI 53089 USA  
 phone: (262) 252-4301 • fax: (262) 246-0436  
[www.pwrst.com](http://www.pwrst.com)

# High Capacity Wheeled Engine Cart



63769 - High Capacity Engine Cart with 42-inch Centerline Accessories shown

Engine Cart shown with optional Wheel Guide Angles, Flywheel Housing Adapter, and C175-16 Front Support. All optional items to be sold separately.

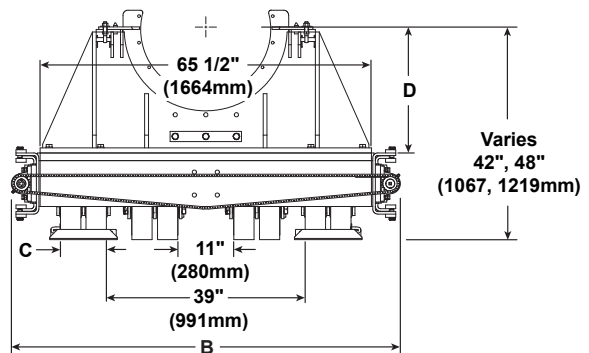
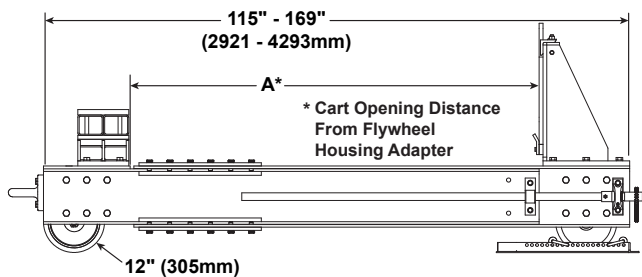
## Overview

Power Test Wheeled Engine Carts provide a stable, portable platform for quick placement of an engine in preparation for testing.

Wheeled Engine Carts:

- Feature heavy gauge structural steel frames.
- Adjustable cart length to precisely match engine.
- Are equipped with polyurethane wheeled casters that protect shop floors and help minimize vibrations.
- Will adapt to a variety of engines with available accessories.
- Are used in conjunction with Power Test Wheel Guide Angles, Front Support, and Flywheel Housing Adapters (*sold separately*).

Wheeled Engine Carts are used to maintain correct engine centerline height relative to the dynamometer in the test cell, allowing one cart to be used for testing a wide range of engine displacements.



**Note** ALWAYS adjust engine cart length with cart free of additional weight. Dimensions shown are for reference only.

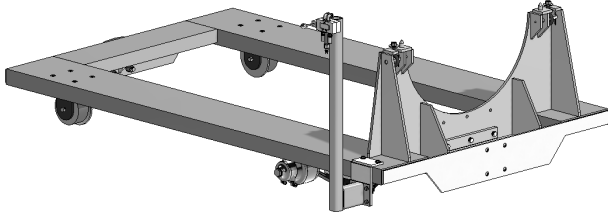
Description	Part #	Dimensions - inches (mm)				Capacity lbs (kg)	Weight lbs (kg)
		A	B	C	D		
Engine Cart Asm. 40K 42CL	63769	80 1/2 to 134 1/2 (2045 to 3416)	76 5/16 (1938)	9 (228)	24 1/4 (616)	40,000 (18144)	3,500 (1588)
Engine Cart Asm. 40K 48CL	63770				30 1/4 (768)		3,640 (1652)



N60 W22700 Silver Spring Drive • Sussex, WI 53089 USA  
 phone: (262) 252-4301 • fax: (262) 246-0436  
[www.pwrst.com](http://www.pwrst.com)

# Pneumatic Engine Cart

## 28" (711mm) Centerline Height



1020510 - 6K 28-inch Centerline 96L Pneumatic Rail Engine Cart Assembly shown

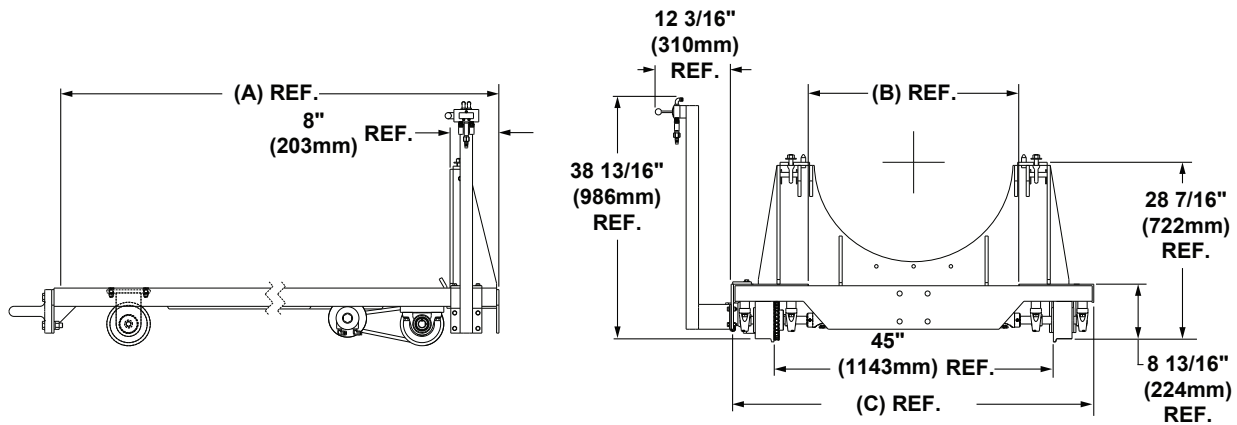
### Overview

Power Test Pneumatic Engine Carts provide a stable, portable platform for quick placement of an engine in preparation for testing.

Pneumatic Engine Carts:

- Feature heavy duty structural steel frames.
- Incorporate a pneumatic drive assembly and rail road style casters for running on rail systems.
- Are available in a variety of lengths and capacities

Pneumatic Engine Carts are used in conjunction with Power Test cart guide angles, a universal front support (UFS), and flywheel housing adapters to maintain correct engine centerline height relative to the dynamometer in the test cell, allowing one cart to be used for testing a wide range of engine displacements.



Description	Part #	Dimensions - inches (mm)			Maximum Air Pressure (psi)	Capacity lbs (kg)	Weight lbs (kg)
		A	B	C			
Engine Cart 6K 96" L	1020510	96 (2438)	34 (863)	58 (1473)	80	6,000 (2721)	1,081 (490)

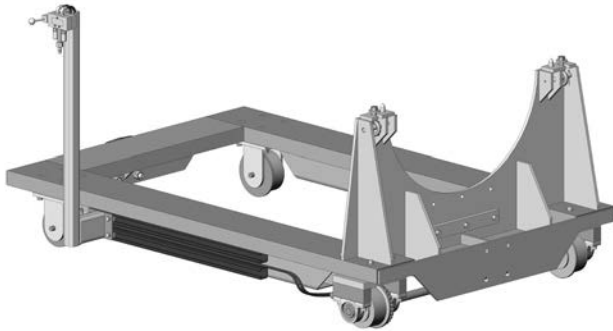
**Note:** Power Test's full service manufacturing facility allows us to design and build a custom engine cart to meet your specific criteria. Contact us for more information on our custom equipment capabilities. We look forward to creating a unique solution for you.



N60 W22700 Silver Spring Drive • Sussex, WI 53089 USA  
 phone: (262) 252-4301 • fax: (262) 246-0436  
[www.pwrst.com](http://www.pwrst.com)

# Pneumatic Engine Cart

## 32" (813mm) Centerline Height



1001637 - 10K 32-inch Centerline STL Cast 78L Pneumatic Engine Cart Assembly shown

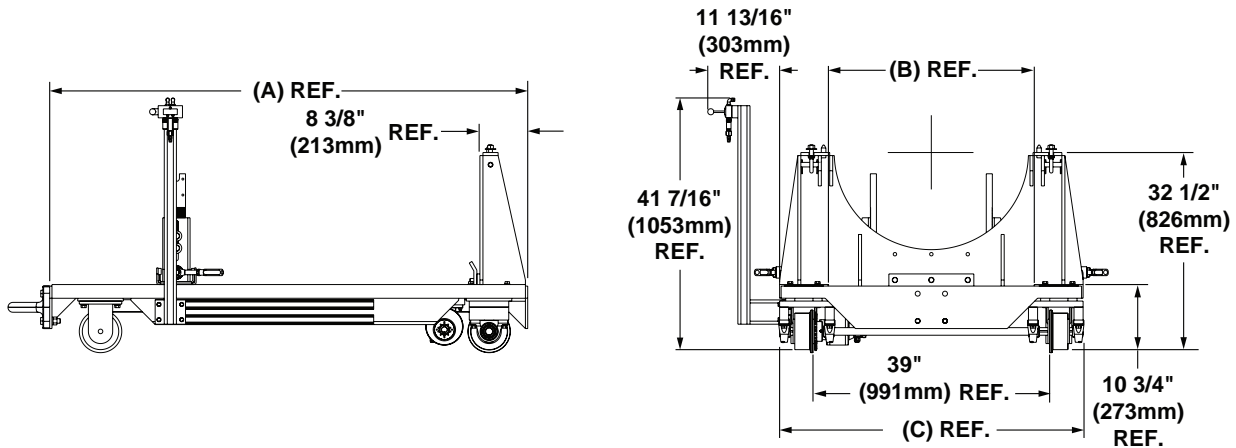
### Overview

Power Test Pneumatic Engine Carts provide a stable, portable platform for quick placement of an engine in preparation for testing.

Pneumatic Engine Carts:

- Feature heavy duty structural steel frames.
- Incorporate a pneumatic drive assembly and rail road style casters for running on rail systems.
- Are available in a variety of lengths and capacities

Pneumatic Engine Carts are used in conjunction with Power Test cart guide angles, a universal front support (UFS), and flywheel housing adapters to maintain correct engine centerline height relative to the dynamometer in the test cell, allowing one cart to be used for testing a wide range of engine displacements.



Description	Part #	Dimensions - inches (mm)			Maximum Air Pressure (psi)	Capacity lbs (kg)	Weight lbs (kg)
		A	B	C			
Engine Cart 10K 78" L	1001637	78 3/4 (2000)	33 7/8 (860)	50 (1270)	80	10,000 (4536)	980 (445)
Engine Cart 10K 96" L	1001644	96 3/4 (2457)	33 7/8 (860)	50 (1270)	80	10,000 (4536)	1,062 (482)

**Note:** Power Test's full service manufacturing facility allows us to design and build a custom engine cart to meet your specific criteria. Contact us for more information on our custom equipment capabilities. We look forward to creating a unique solution for you.

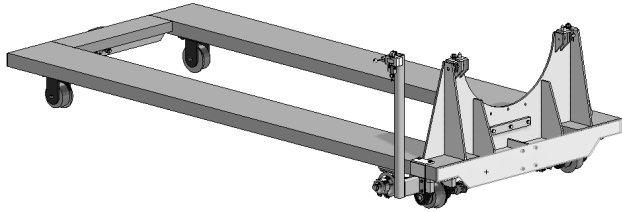


N60 W22700 Silver Spring Drive • Sussex, WI 53089 USA  
 phone: (262) 252-4301 • fax: (262) 246-0436  
[www.pwrst.com](http://www.pwrst.com)



# Pneumatic Engine Cart

## 38" (965mm) Centerline Height



1020509 - 30K 38-inch Centerline 148L Pneumatic Rail Engine Cart Assembly shown

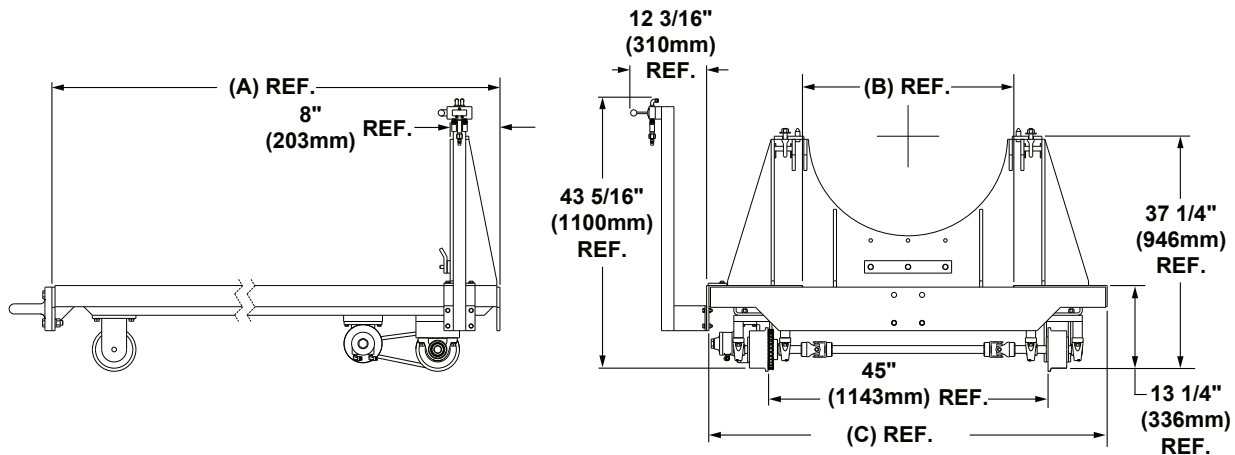
### Overview

Power Test Pneumatic Engine Carts provide a stable, portable platform for quick placement of an engine in preparation for testing.

Pneumatic Engine Carts:

- Feature heavy duty structural steel frames.
- Incorporate a pneumatic drive assembly and rail road style casters for running on rail systems.
- Are available in a variety of lengths and capacities

Pneumatic Engine Carts are used in conjunction with Power Test cart guide angles, a universal front support (UFS), and flywheel housing adapters to maintain correct engine centerline height relative to the dynamometer in the test cell, allowing one cart to be used for testing a wide range of engine displacements.



Description	Part #	Dimensions - inches (mm)			Maximum Air Pressure (psi)	Capacity lbs (kg)	Weight lbs (kg)
		A	B	C			
Engine Cart 30K 148" L	1020509	149 (3784)	34 (863)	64 (1625)	80	30,000 (13608)	2,245 (1018)

**Note:** Power Test's full service manufacturing facility allows us to design and build a custom engine cart to meet your specific criteria. Contact us for more information on our custom equipment capabilities. We look forward to creating a unique solution for you.



N60 W22700 Silver Spring Drive • Sussex, WI 53089 USA  
 phone: (262) 252-4301 • fax: (262) 246-0436  
[www.pwrst.com](http://www.pwrst.com)