

Water Brake Engine Dynamometers - 45X-Series

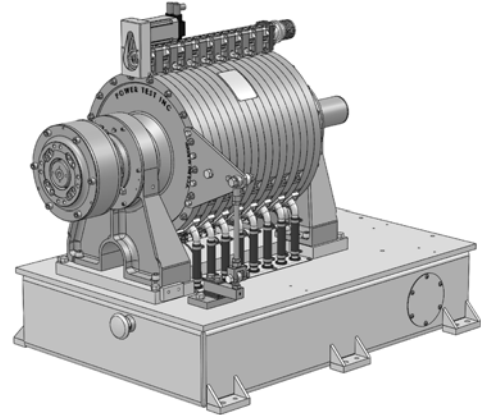
Overview

Power Test 45X-Series Water Brake Engine Dynamometers are designed for testing mining, marine, construction, power generation and on-highway applications from 200 HP to 4,500 HP at speeds up to 4,000 RPM.

The 45X-Series Water Brake Engine Dynamometers feature:

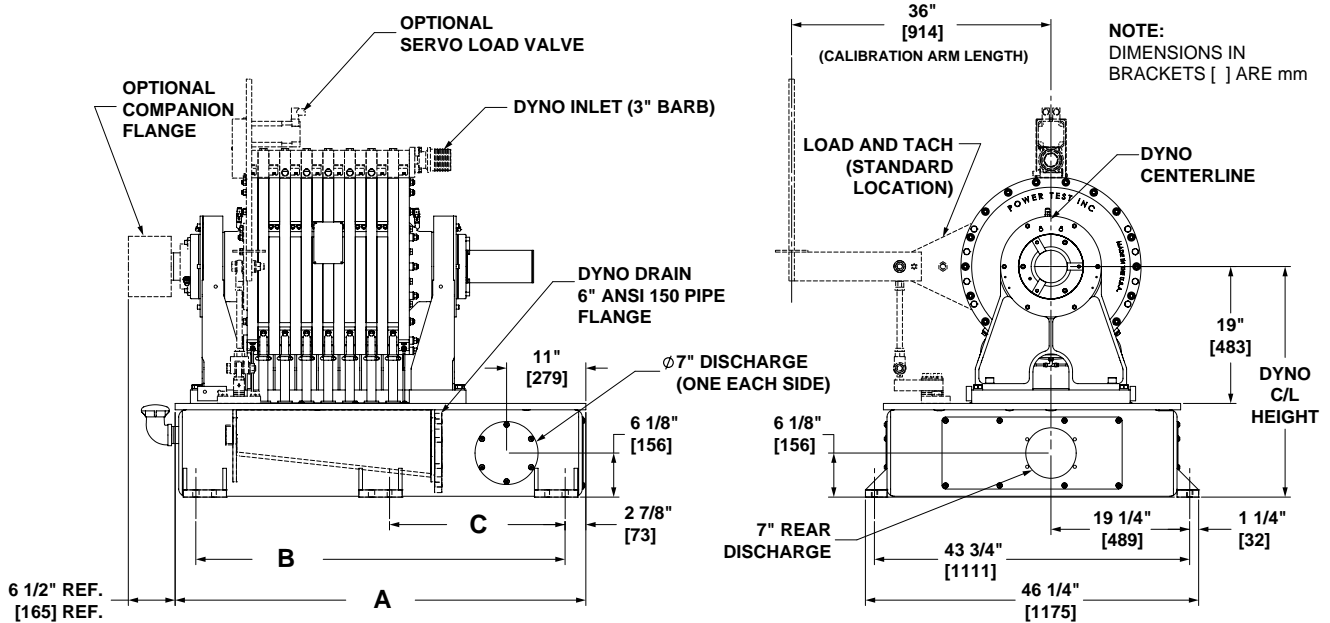
- The ability to test a wide range of engine displacements on the same dynamometer.
- Low-inertia and high absorption characteristics in a compact package.
- Through-shaft design allows either end of the dynamometer to be driven and to accept additional dynamometers plus a variety of accessories including starting systems.
- Inlet control allows for low minimum horsepower.
- Unique vented design ensures uniform water, load and temperature distribution.
- Low minimum loading characteristics.
- Equal absorption capabilities in either direction of rotation.
- Includes a fabricated steel Sub-base assembly at 32" (813 mm), 38" (965 mm) or 42" (1067 mm) center line height. (other center line heights available upon request)
- Equipped with maintenance-free sealed bearings.
- Removable bearing housings to facilitate field servicing without the need for disassembly of the absorber.

These trunnion-mounted, fixed-base Water Brake Engine Dynamometers may be used for continuous-duty engine power verification, quality assurance, endurance, and certification testing.



1031463.08 - 45X08 Vented Dyno and Sub-Base Asm 32"CL Shown with options

Water Brake Engine Dynamometers - 45X-Series

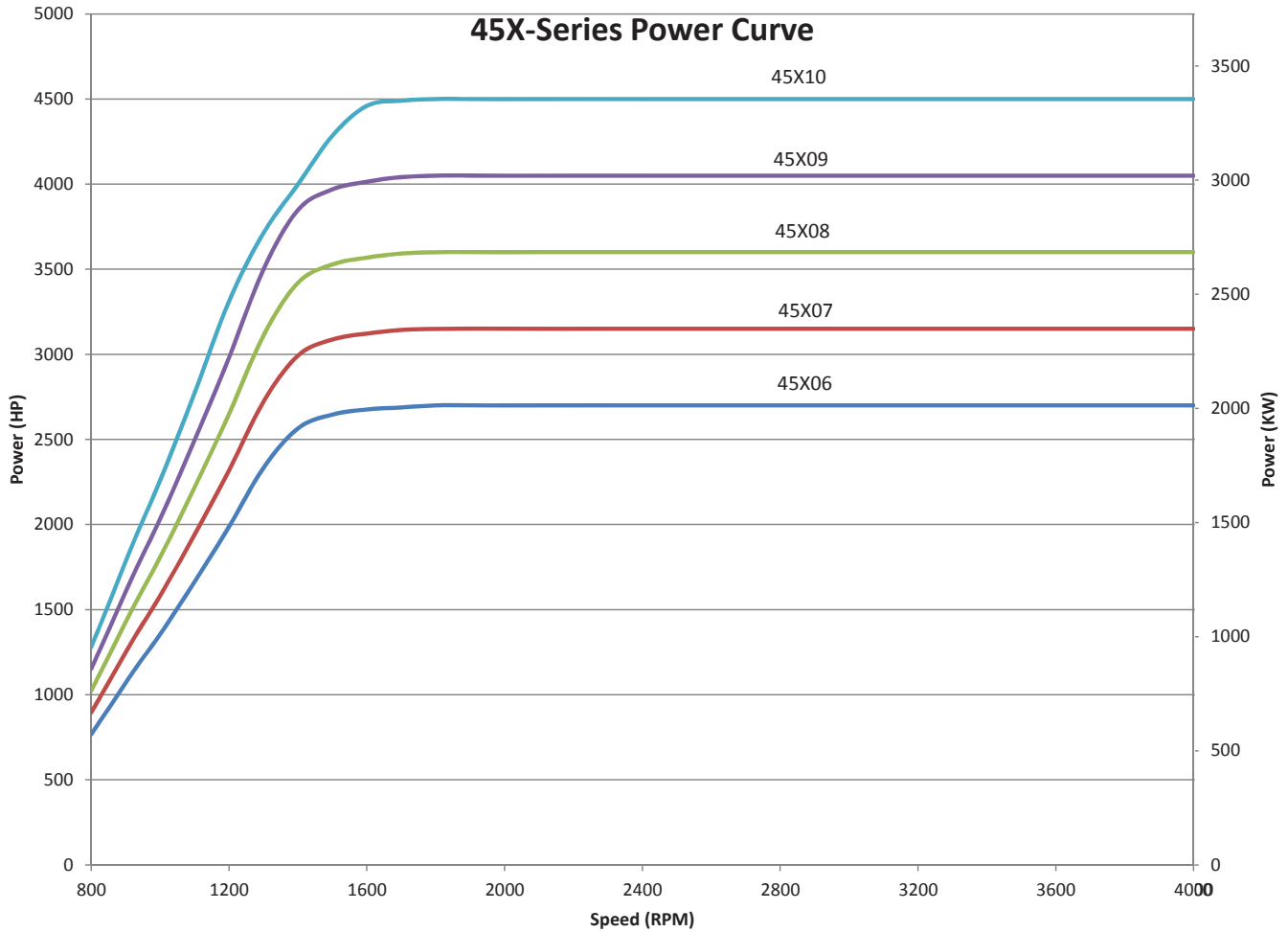


Description	Part #	Dimensions (inches)			Weight (lbs)	Inertia (lb-ft ²)
		A	B	C		
45X06 & Base 32"CL	1031463.06	54	48 1/4	22 7/8	3,590	195.4
45X07 & Base 32"CL	1031463.07	57	51 1/4	24 3/8	3,886	227.8
45X08 & Base 32"CL	1031463.08	60	54 1/4	25 7/8	4,183	260.1
45X09 & Base 32"CL	1031463.09	63	57 1/4	27 3/8	4,480	292.4
45X10 & Base 32"CL	1031463.10	66	60 1/4	28 7/8	4,776	324.7

Description	Part #	Dimensions (mm)			Weight (kg)	Inertia (kg m ²)
		A	B	C		
45X06 & Base 32"CL	1031463.06	1372	1226	581	1,628	8.23
45X07 & Base 32"CL	1031463.07	1448	1302	619	1,763	9.60
45X08 & Base 32"CL	1031463.08	1524	1378	657	1,897	10.95
45X09 & Base 32"CL	1031463.09	1600	1454	695	2,032	12.31
45X10 & Base 32"CL	1031463.10	1676	1530	733	2,166	13.67

NOTE: 32" (813 mm) center line height shown above. 38" (965 mm), 42" (1067 mm) or a unique center line height option are available upon request, contact your representative.

Water Brake Engine Dynamometers - 45X-Series

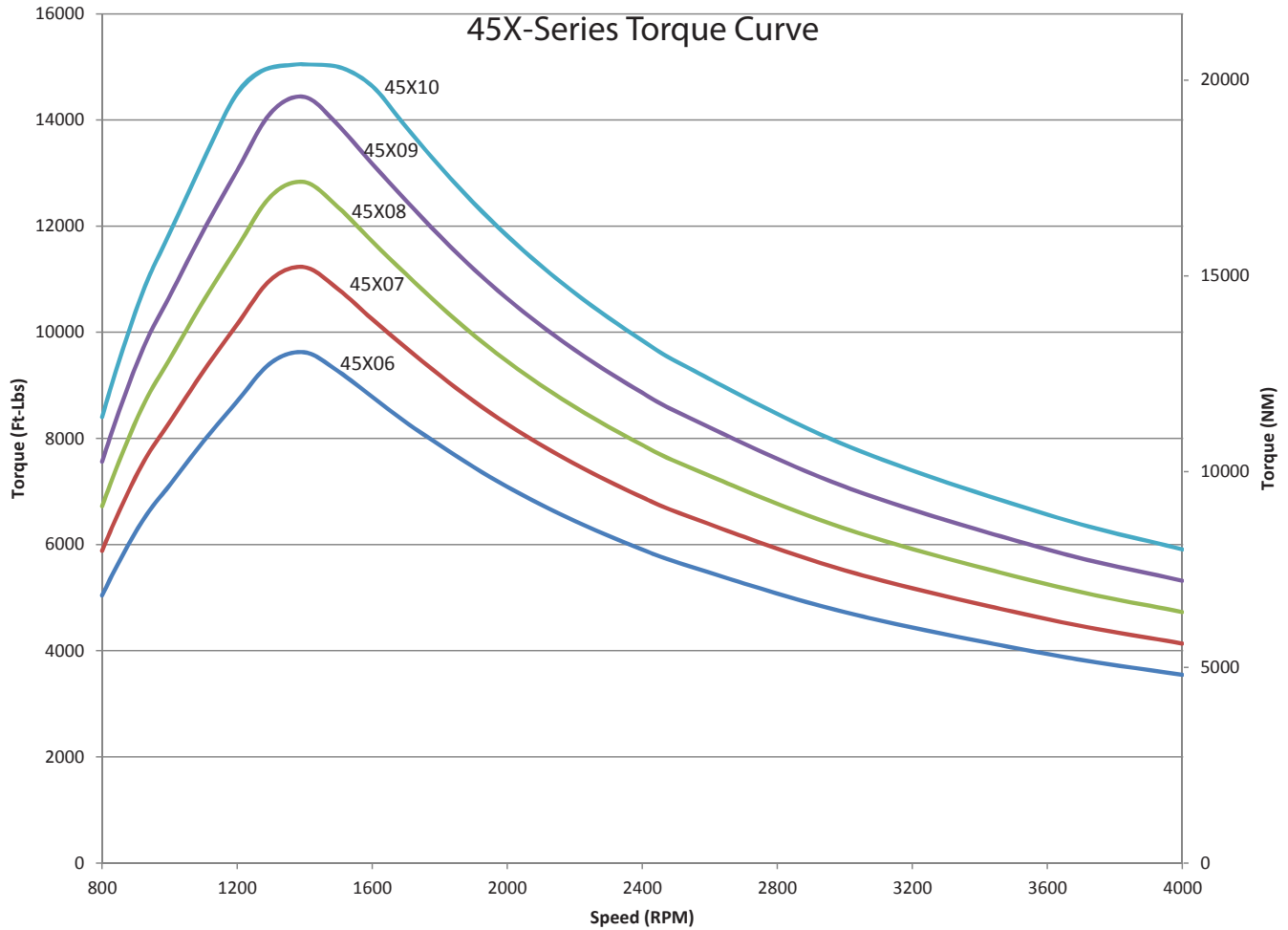


RPM	Power - HP (KW)				
	45X06	45X07	45X08	45X09	45X10
800	768 (573)	896 (668)	1,024 (764)	1,152 (859)	1,280 (955)
1,000	1,355 (1,011)	1,581 (1,180)	1,807 (1,348)	2,033 (1,517)	2,259 (1,685)
1,200	1,987 (1,482)	2,318 (1,730)	2,650 (1,977)	2,981 (2,224)	3,312 (2,471)
1,400	2,565 (1,913)	2,993 (2,232)	3,420 (2,551)	3,848 (2,870)	3,998 (2,983)
1,500	2,646 (1,974)	3,087 (2,303)	3,528 (2,632)	3,969 (2,961)	4,284 (3,196)
2,000	2,700 (2,014)	3,150 (2,350)	3,600 (2,686)	4,050 (3,021)	4,500 (3,357)
2,500	2,700 (2,014)	3,150 (2,350)	3,600 (2,686)	4,050 (3,021)	4,500 (3,357)
3,000	2,700 (2,014)	3,150 (2,350)	3,600 (2,686)	4,050 (3,021)	4,500 (3,357)
3,500	2,700 (2,014)	3,150 (2,350)	3,600 (2,686)	4,050 (3,021)	4,500 (3,357)
4,000	2,700 (2,014)	3,150 (2,350)	3,600 (2,686)	4,050 (3,021)	4,500 (3,357)



N60 W22700 Silver Spring Drive • Sussex, WI 53089 USA
 phone: (262) 252-4301 • fax: (262) 246-0436
www.powertestdyno.com

Water Brake Engine Dynamometers - 45X-Series



RPM	Torque - Lb-Ft (NM)				
	45X06	45X07	45X08	45X09	45X10
800	5,042 (6,836)	5,882 (7,975)	6,723 (9,114)	7,563 (10,254)	8,403 (11,393)
1,000	7,119 (9,651)	8,305 (11,260)	9,491 (12,868)	10,678 (14,447)	11,864 (16,086)
1,200	8,697 (11,792)	10,147 (13,757)	11,596 (15,722)	13,046 (17,688)	14,496 (19,653)
1,400	9,622 (13,046)	11,226 (15,220)	12,830 (17,395)	14,434 (19,569)	15,000 (20,337)
1,500	9,265 (12,561)	10,809 (14,654)	12,353 (16,748)	13,897 (18,841)	15,000 (20,337)
2,000	7,090 (9,631)	8,272 (11,215)	9,454 (12,817)	10,635 (14,419)	11,817 (16,021)
2,500	5,672 (7,690)	6,618 (8,972)	7,563 (10,254)	8,508 (11,535)	9,454 (12,817)
3,000	4,727 (6,409)	5,515 (7,477)	6,302 (8,545)	7,090 (9,613)	7,878 (10,681)
3,500	3,939 (5,340)	4,596 (6,231)	5,252 (7,121)	5,909 (8,011)	6,565 (8,901)
4,000	3,545 (4,806)	4,135 (5,606)	4,727 (6,409)	5,318 (7,210)	5,909 (8,011)

Power Test, Inc. manufactures a wide range of standard and custom water brake engine dynamometers. For absorption characteristics other than the model shown, please contact your Power Test representative.



N60 W22700 Silver Spring Drive • Sussex, WI 53089 USA
 phone: (262) 252-4301 • fax: (262) 246-0436
www.powertestdyno.com