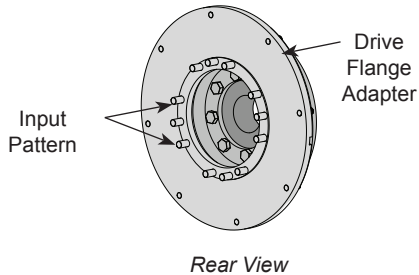


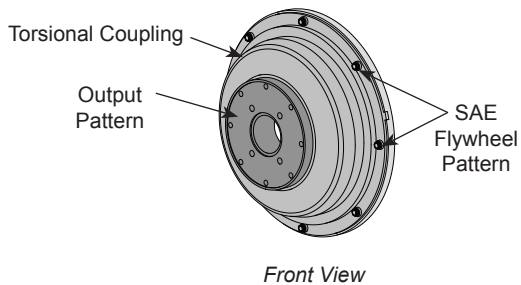
Engine-Mounted Torsionally Resilient Coupling



43789 Torsionally Resilient Coupling shown



Rear View



Front View

Overview

The Power Test Engine-Mounted Torsionally Resilient Coupling is used to provide dampening of high-amplitude torsional vibration during engine testing.

Power Test Engine-Mounted Torsionally Resilient Couplings:

- Minimize the transmission of engine vibrations to the dynamometer
- Moves the driveline natural frequency speeds outside the engine operating range
- May be supplied with drive flange adapter plates to adapt to SAE 1810, 1710, 1610, and 1410 engine crankshaft adapters (*sold separately*).
- Coupling can be mounted to matching SAE flywheel pattern by removing drive flange adapter plate and bolting directly to flywheel

The Power Test Engine-Mounted Torsionally Resilient Coupling are intended to mount to the Engine Crankshaft Adapter (*purchased separately*) already attached to the engine's crankshaft/flywheel.

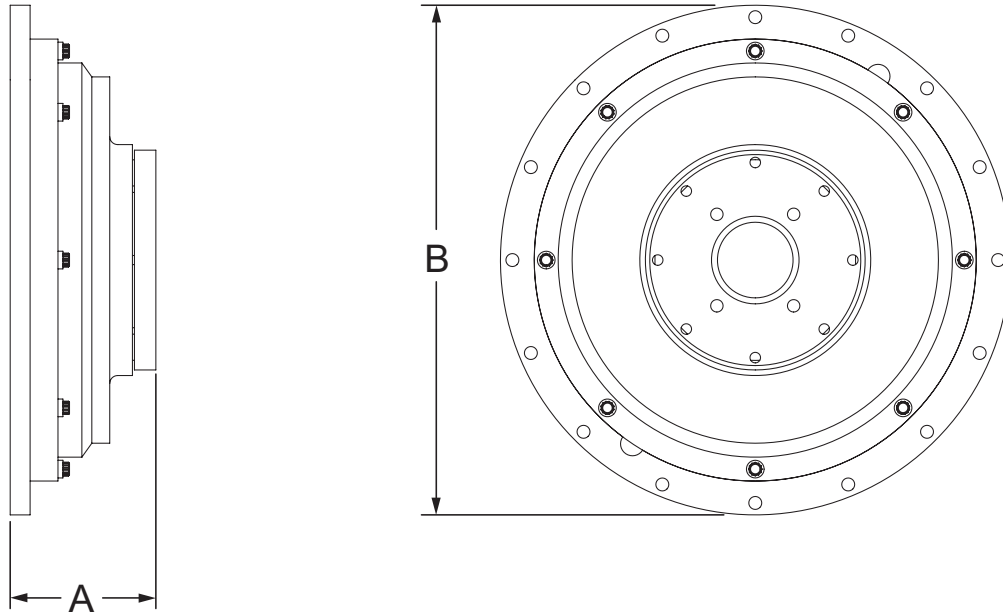
Description	Assm. Part #	Available Input Patterns	Flywheel Pattern	Available Output Patterns	*Max Torque ft-lbs (Nm)	Max RPM	Weight lbs (kg)
EMTR Coupling	43937	1410 / 1610 / 1810	J620 - 8" (203mm)	1410	288 (391)	4,500	31 (14)
EMTR Coupling	43789	1610 / 1710 / 1810	J620 - 11 1/2" (292mm)	1410 / 1610	800 (1085)	3,600	63 (29)
EMTR Coupling	44297	1610 / 1710 / 1810	J620 - 11 1/2" (292mm)	1410 / 1610	1500 (2034)	3,600	67 (31)
EMTR Coupling	44195	1810	J1857 - 15 1/2" (394mm) J620 - 14" (356mm)	1610 / 1810	2200 (2983)	3,000	105 (48)

* Engine and dynamometer combination may affect maximum torque rating, verify order with your Power Test representative.



N60 W22700 Silver Spring Drive • Sussex, WI 53089 USA
 phone: (262) 252-4301 • fax: (262) 246-0436
www.pwrst.com

Engine-Mounted Torsionally Resilient Coupling



Description	Part #	Dimensions (inches)	
		A	B
EMTR Coupling	43937	2 11/16	Ø 10 5/8
EMTR Coupling	43789	4	Ø 14 1/8
EMTR Coupling	44297	4 1/2	Ø 14 1/8
EMTR Coupling	44195	5 1/4	Ø 18 1/16

Description	Part #	Dimensions (mm)	
		A	B
EMTR Coupling	43937	68	Ø 270
EMTR Coupling	43789	102	Ø 359
EMTR Coupling	44297	114	Ø 359
EMTR Coupling	44195	133	Ø 459