

Charge Air-Cooling System Simulator (CAC-Series)



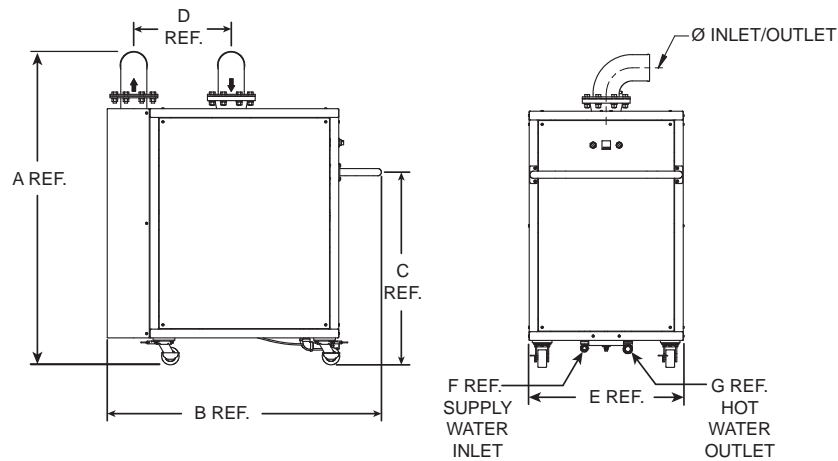
24236 1,000 HP Charge Air-Cooling System shown

Overview

Power Test Charge Air-Cooling System facilitates testing of air to air after-cooled engines in a test cell.

Charge Air-Cooling System:

- Provides PLC temp. control of charge air outlet to within 15° F (-9° C) of inlet water temp.
- Maintains engine inlet air temperatures while testing turbocharged engines.
- 50 PSI rated air inlet pressure.
- 450° F (232° C) rated air inlet temp.
- Requires 35 PSI min. water pressure.
- May be used in tandem for higher output applications.
- Power requirements:
Voltage: 120/240 (VAC)
Amperage: 0.5A

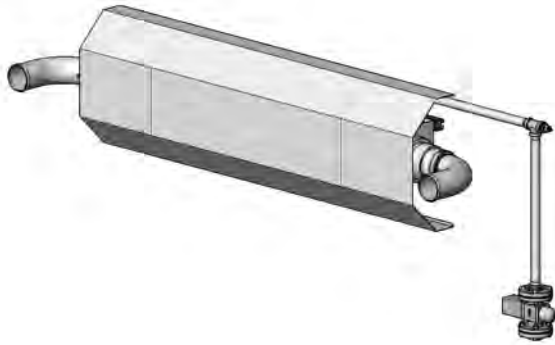


Description	Part #	Dimensions inches (mm)								Water Flow Req. @ 85°F (GPM)	Weight lbs (kg)
		A	B	C	D	E	F	G	Ø		
CAC 500 HP	1005811	72 7/8 (1851)	48 13/16 (1240)	42 (1067)	19 (483)	30 (762)	3/4 (19)	1 (25)	4 (101)	20	815 (370)
CAC 1,000 HP	24236	65 (1651)	56 7/8 (1445)	42 (1067)	19 (483)	30 (762)	3/4 (19)	1 (25)	4 (101)	42	1,120 (508)
CAC 1,500 HP	24237	71 5/8 (1819)	63 1/8 (1603)	44 (1118)	22 1/2 (571)	35 1/2 (902)	1 (25)	1 1/4 (32)	6 (152)	63	1,550 (703)
CAC 2,000 HP	24238	77 1/4 (1962)	67 5/8 (1718)	44 (1118)	24 3/8 (619)	39 1/2 (1003)	1 1/4 (32)	1 1/2 (38)	6 (152)	84	2,310 (1048)



N60 W22700 Silver Spring Drive • Sussex, WI 53089 USA
phone: (262) 252-4301 • fax: (262) 246-0436
www.pwrtst.com

Charge Air Coolers (Wall Mount)



63494 Charge Air Cooler - Wall Mount shown

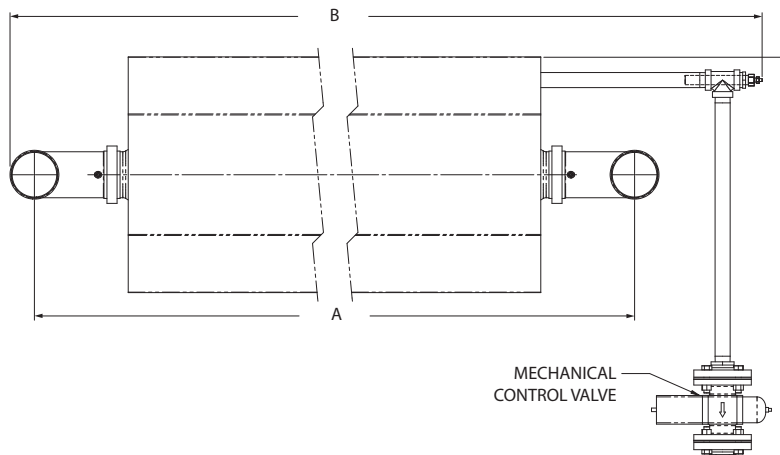
Overview

Power Test Charge Air Coolers replace the vehicular after-cooler for testing air to air after-cooled engines in a test cell. Internal water temperature is maintained through the use of a simple, reliable mechanical control valve. Requires no electrical power.

Power Test Charge Air Coolers:

- Cools charge air outlet to within 15° F (-9° C) of inlet water temp.
- 70 PSI rated air inlet pressure.
- 450° F (232° C) rated air inlet temp.
- Requires 35 PSI min. water pressure.
- Maintains inlet air temperatures while testing turbocharged engines.
- May be used in tandem for higher output applications.

The Charge Air Cooler is designed to replicate the cooling effect in an in-frame application. Charge air is cooled as it flows through the unit. Cool water is introduced into the system as the temperature of the water within the charge air cooler rises.



Description	Part #	Dimensions - inches (mm)			Water Flow Req. @ 85°F (GPM)	Weight lbs (kg)
		A	B	C		
Charge Air Cooler - 600 HP	63494	86 5/16 (2192)	100 (2540)	35 (889)	25	390 (177)



N60 W22700 Silver Spring Drive • Sussex, WI 53089 USA
 phone: (262) 252-4301 • fax: (262) 246-0436
www.pwrtst.com