



900C Hydraulic Test Center

www.pwrtst.com



Model 900C Hydraulic Test Center

A versatile test stand designed for testing heavy-duty off-highway hydraulic components, the AIDCO Model 900C Hydraulic Test Center features some of the most advanced technology on the market today. Designed for complete pump, motor, and hydrostatic transmission testing, the Model 900C is much more than a standard transmission test bench.

The Model 900C provides a durable and reliable platform for performance testing transmissions, torque converters, gear pumps, vane pumps, hydrostatic pumps, hydraulic motors, cylinders, and valves. Performance testing results in reduced operating costs due to rebuilding errors and the possibility of critical failure in the field. Equipment dealers can realize more profitable maintenance contracts and increased customer satisfaction by utilizing performance testing. Additionally, the Model 900C features an independent closed loop hydrostatic drive for a contamination free drive system, independent constant display digital instrumentation for easy readability, and industrial grade glycerin filled pressure gauges.



900C painted blue, ask your representative about the custom finish options available for every AIDCO product.

Capable of detecting shift points and mechanical binding, identifying vibrations, diagnosing and locating leaks, measuring pressure and flow, clutch leakage and output torque (optional), the AIDCO Model 900C Hydraulic Test Center is one of the most comprehensive hydraulic testing tools on the market.

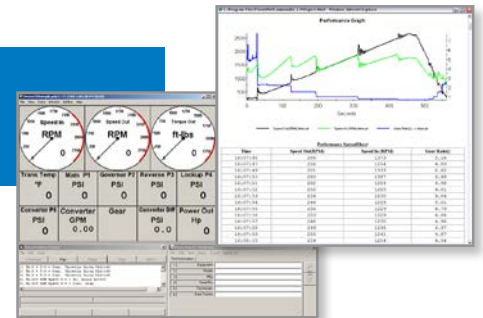
PowerNet TD Data Acquisition and Control System is available for all AIDCO Transmission and Hydraulic Test Stands.

Data Acquisition and Control Systems

PowerNet TD is designed to provide a comprehensive, easy to use data acquisition and control system for all AIDCO customers. PowerNet TD utilizes a Windows-based computerized data acquisition system to monitor and record speeds, torque, pressures, temperatures, flow rates and shift events.

In addition to advanced monitoring and recording, PowerNet TD enables AIDCO users to run an automated test procedure for electronically controlled transmissions. This not only ensures consistent repeatability of test procedures, but provides a record of performance parameters exhibited during a test.

Designed for ease of use, PowerNet TD allows for easy configuration of instrumentation, operator designated warnings for high/low limit and operator customized full-feature data reports. All reports are generated in a standardized HTML format.



Features and Benefits of the 900C

Every Model 900C Hydraulic Test Center is custom built to your specifications. AIDCO's in-house manufacturing allows for short lead times, allowing you to begin testing as soon as possible.

300/400/450 HP electric motor upgrade available

Soft Start Contactor:

- Aids in reducing peak current draw during the motor start cycle.
- Reduces voltage drop ("brown out") during initial start.
- Allows usage with a generator.
- Works with 380, 400, 415, 480 VAC input requirements.

On-site Training and Commissioning

Interior Soundproofing

Dual Centrifugal Oil Cleaning Circuit with 8.0 gpm pump:

- Provided optimum oil cleansing through a kidney loop system.

Power Lift Assembly:

- Facilitates easy maneuvering of the hydraulic drive motor/drive shaft for alignment with the test component.

PowerNet TD Data Acquisition and Control:

- Offers full control and data acquisition for complete pump, motor, and hydrostatic transmission testing.

Safety and Maintenance Features:

- Rear door access and ample interior lighting for added visibility and safety during maintenance.
- Roof access to filters for easy maintenance.
- Multi-location ladder for convenient machine-top access and maximum safety.
- Polycarbonate Sliding Safety Shield - Used to protect operator from fluid splash and small projectiles.



Model 900C
with worktable



Gauge &
Pressure Tap
Panels



Optional Features

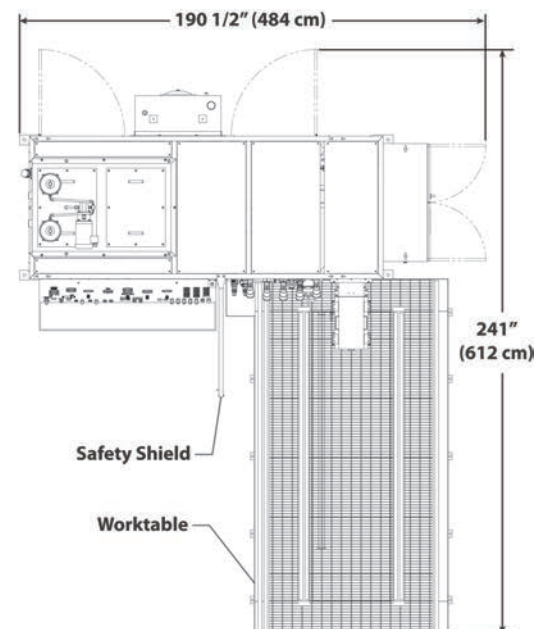
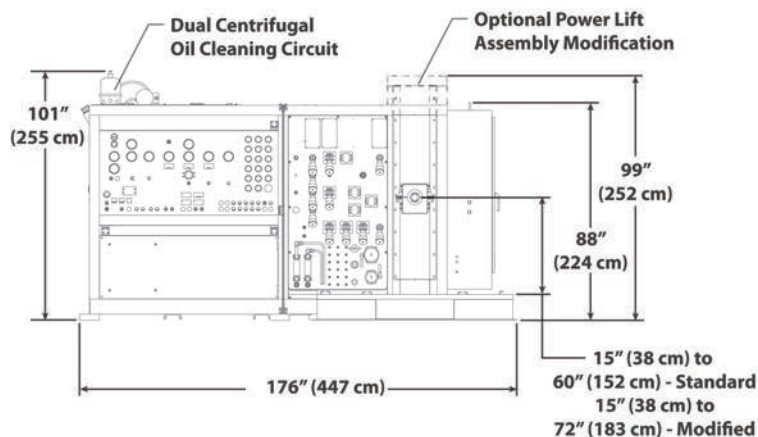
Adapters available for most Caterpillar off-highway equipment

Optional Rectifier Manifold

- Allows for testing of closed circuit pumps.

Output Load, Eddy Current Absorber and stand:

- Trolley mounted - capable of vertical and horizontal movement.
- Continuous torque - 525 lb. ft.,
- Intermittent torque - 1,470 lb. ft.



Model 900C Specifications

Electric	Test centers utilize a soft-start starting method to reduced motor startup voltage drop.	900C-300	300HP (223 kW) 460V/60 Hz - 500 Amps 250HP (187 kW) 380V/50 Hz - 500 Amps
		900C-400	400HP (298 kW) 460V/60 Hz - 600 Amps 330HP (246 kW) 380V/50 Hz - 600 Amps
		900C-450	450HP (335 kW) 460V/60 Hz - 700 Amps 370HP (276 kW) 380V/50 Hz - 700 Amps
Hydrostatic Drive System	Direction	CCW & CW	
	Max Speed	3,200 RPM	
	Max Torque	1,232 Lb-ft (1,670 N-m)	
	Max Torque Speed Range	900C-300 0-1,270 RPM	900C-400 / 900C-450 0-1,760 RPM
	Max Pressure	6,090 PSI (41,989 kPa)	
	Pump Displacement	900C-300 180cc	900C-400 / 900C-450 250cc
	Motor Displacement	250cc	
Diagnostic Flow Loops	Loadable	200 GPM	0-200 GPM (0-757 L/min), 0-6,500 PSI (44,816 kPa) flow loop with manual load valve and 10,000 PSI (68,948 kPa) gauge for monitoring pressure.
		100 GPM	0-100 GPM (0-378 L/min), 0-6,500 PSI (44,816 kPa) flow loop with manual load valve and two (2) 10,000 PSI (68,948 kPa) gauges for monitoring pressure. Loop also includes a 500 PSI (3,447 kPa) differential gauge to monitor margin pressure.
	Non-loadable	100 GPM	0-100 GPM (0-379 L/min), 0-6,500 PSI (44,816 kPa) flow loop and a 10,000 PSI (68,948 kPa) gauge for monitoring pressure.
		Low Flow	0.5-5.0 GPM (2-19 L/min) flow loop.
		Low Flow	0.2-2.0 GPM (0.76-8 L/min) flow loop.
	Hydraulic Fluid Supply Circuits	AUX	0-84 GPM (318 L/min), 450-6,090 PSI (41,989 kPa) pressurized oil supply circuit with flow control valve, panel meter and 7,500 PSI (51,710 kPa) gauge for monitoring pressure.
Supercharge		0-31 GPM (117 L/min), 180-800 PSI (5,516 kPa) pressurized oil supply circuit with 1,000 PSI (6,895 kPa) gauge for monitoring pressure. Optional flow control kit available for circuit.	
High PSI		0-3.6 GPM (13 L/min), 0-7,200 PSI (49,642 kPa) pressurized oil supply circuit with 10,000 PSI (68,948 kPa) gauge for monitoring pressure.	
Pilot		High PSI pump provides pressurized oil supply for this 0-3.6 GPM (13 L/min), 0-800 PSI (5,516 kPa) circuit with 1,000 PSI (6,895 kPa) gauge for monitoring pressure.	
Lube		High PSI pump provides pressurized oil supply for this 0-8 GPM (30 L/min), 0-65 PSI (448 kPa) circuit with 200 PSI (1,379 kPa) gauge for monitoring pressure.	

Power Test - Your Full Service Manufacturer

AIDCO manufactures a wide range of transmission testing equipment, including electronic shift consoles, valve body test stands, and transmission test stands.

Contact your Power Test representative or visit our web site at www.pwrtst.com for more information.



Power Test Incorporated
 N60 W22700 Silver Spring Drive
 Sussex, WI 53089 USA
 262-252-4301
www.pwrtst.com