

Actual products may differ
from images shown

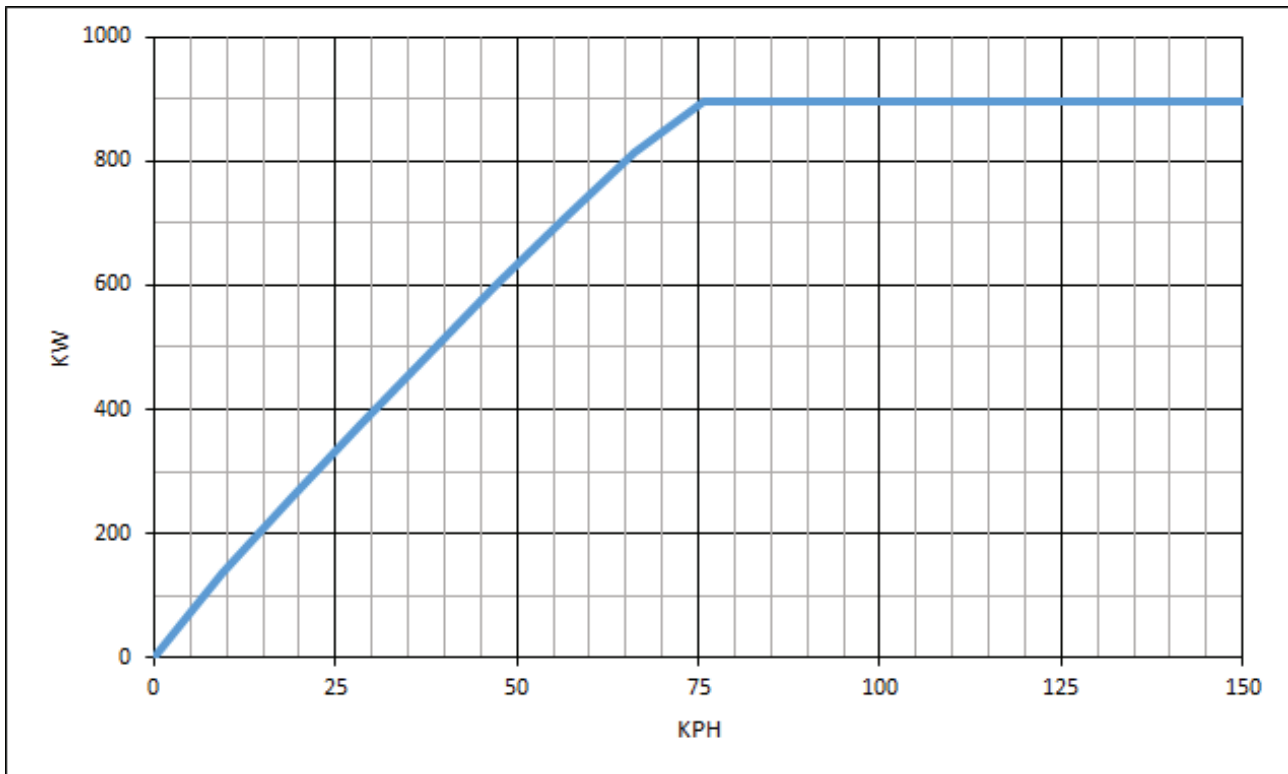
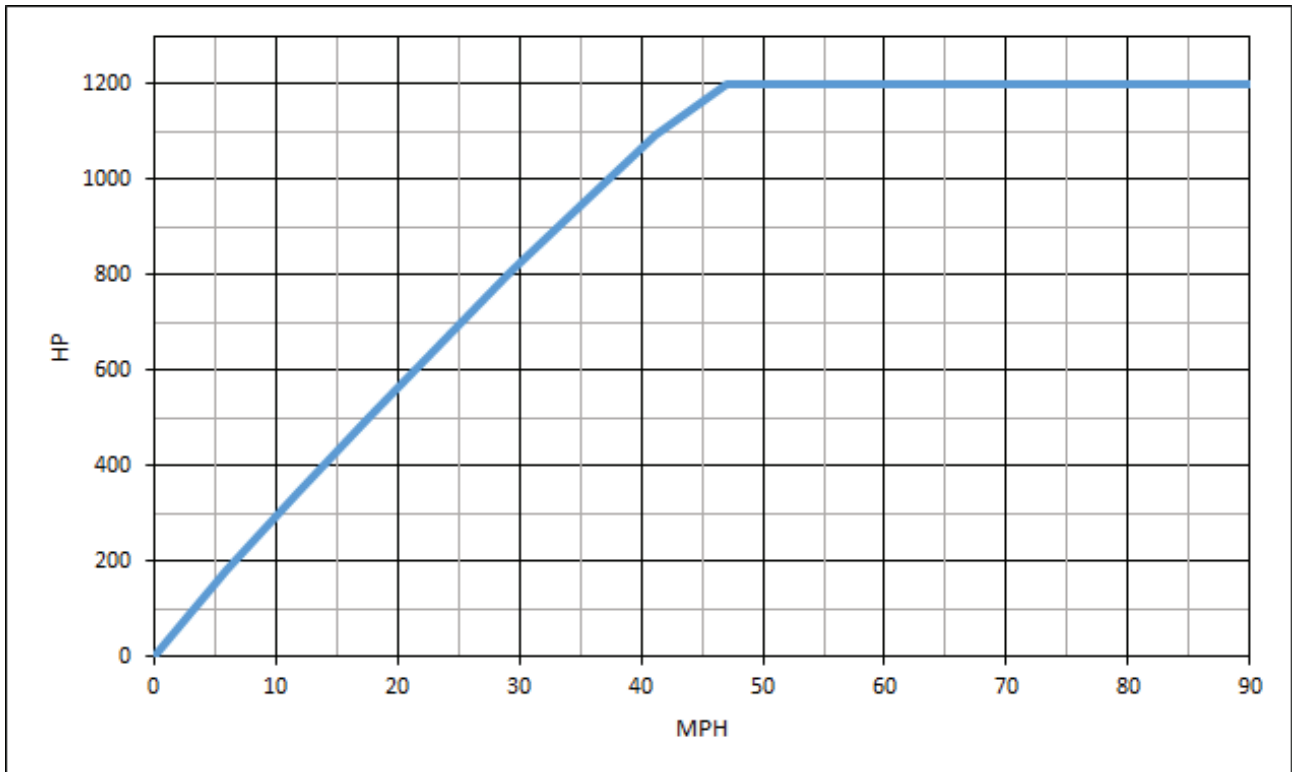
Specifications:

Horsepower:	622 hp (464 kW) 45 mph (72 km/h) 720 hp (537 kW) 60 mph (97 km/h) 800 hp (597 kW) 90 mph (145 km/h)
Absorber:	Air-cooled eddy current load absorbers
Roll Specs:	20" (508 mm) diameter, precision balanced rolls Proprietary siped traction grooves 24" (25 mm) roll spacing 36" (914 mm) inner track width 108" (2,743 mm) outer track width
Wheelbase:	45" - 60" (1,143 - 1,524 mm) - accomodation
Maximum Speed:	90 mph (145 km/h) continous 120 mph (185 km/h) intermittent
Axle Weight:	30,000 lbs (13,636 kg) maximum per axle
Frame:	Precision ground, heavy duty structural steel Above ground installation kit available
Power:	120 VAC single phase, 60 Hz, 15 A (controller) 230 VAC single phase, 60 HZ, 40 A
Shipping Weight:	14,040 lb (6,380 kg)

Recommended Accessories:

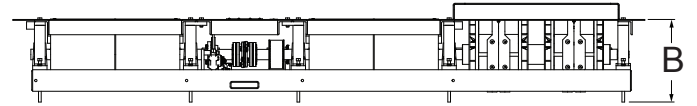
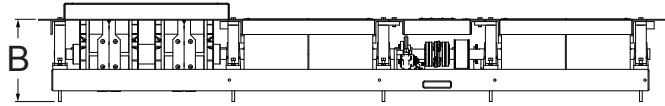
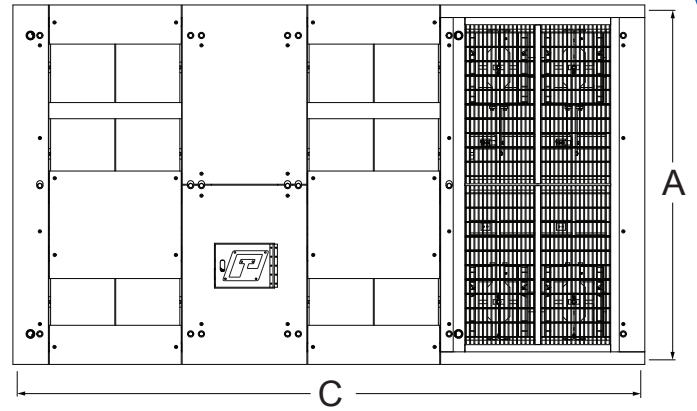
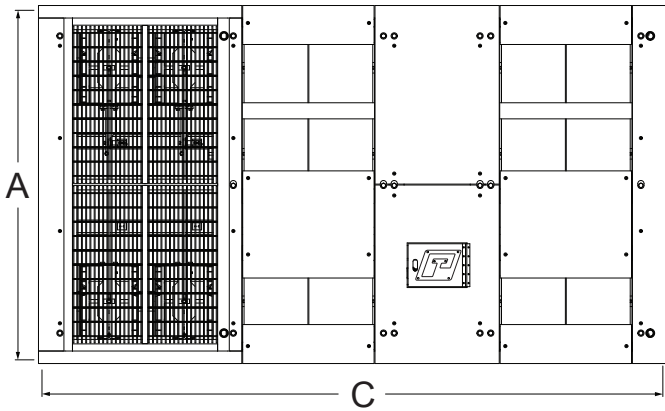
- Exhaust Hood
- Above Grade Installation Kit
- Pressure and Temperature Sensor Kits
- Fuel Measurement System
- Smoke Opacity Meter
- Stone Guard
- PowerNet Data Acquisition and Control

Cold Power Absorption Curves



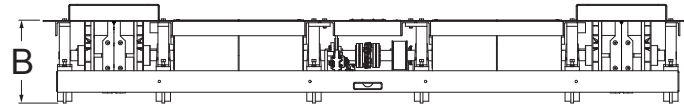
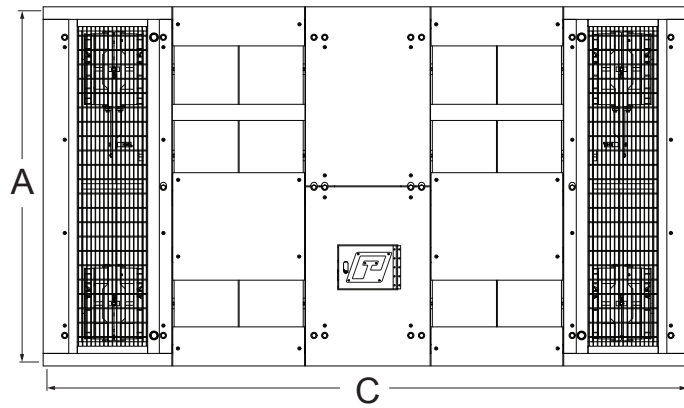
Available Configurations

in
(mm)



**Left Side Absorbers
CF22EC-SLB**

**Right Side Absorbers
CF22EC-SRB**



**Split Absorbers
CF22EC-SCB**

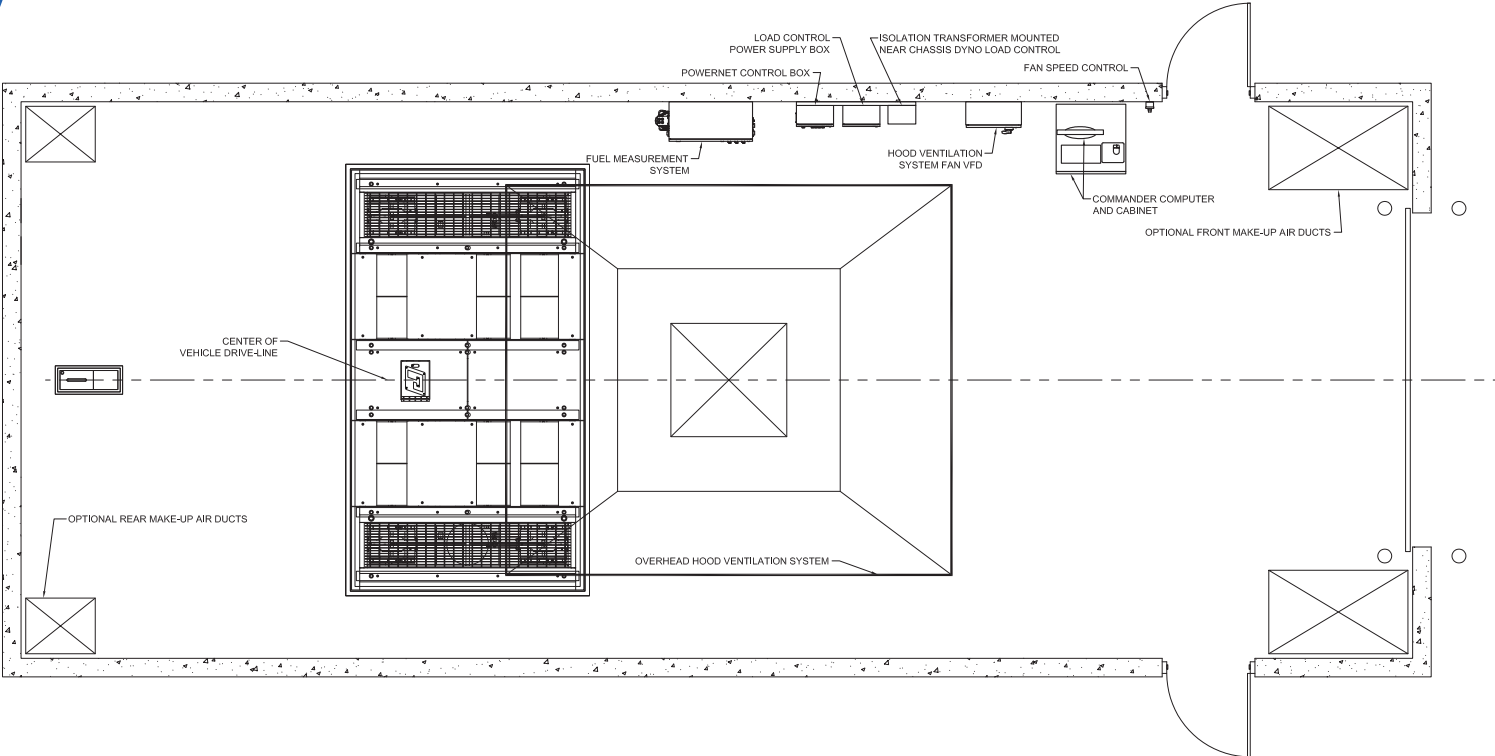
Standard arrangement shown, other heights available as custom options

Pit Dimensions*				
Description	A	B**	C	Weight
CF22EC-SLB	97.125 in (2,467 mm)	23 in (584 mm)	173 in (4,394 mm)	13,315 lbs (6,039 kg)
CF22EC-SCB	97.125 in (2,467 mm)	23 in (584 mm)	178 in (4,521 mm)	13,600 lbs (6,168 kg)l
CF22EC-SRB	97.125 in (2,467 mm)	23 in (584 mm)	173 in (4,394 mm)	13, 315 lbs (6,039 kg)

*Dimensions shown are for reference only, refer to appropriate Power Test room layout drawings.

**Required Pit Depth.

Typical Chassis Dynamometer Room Layout



Refer to applicable Power Test room layout drawings. Layout shown is for reference only.
 Power Test partners with our customers to develop customized room layouts.
 Contact your Power Test representative for assistance in designing your test cell; additional fees apply for test cell layout design.

Power Test®, LLC, an industry leader in the design, manufacture and sales of dynamometers, specialized test systems, and related data acquisition and control systems. Power Test, LLC, offers a comprehensive portfolio of brands including Power Test, Taylor Dyno™, Dyne Systems™, SuperFlow®, Axiline® Precision Products, Hicklin® Engineering, Stuska® Dynamometer, and Torque Converter Rebuilding Systems (TCRS™), that have long been the standard for quality in the testing industry. As your equipment testing partner for innovative products and comprehensive life-cycle services and support, we are dedicated to delivering an exceptional experience by offering specialized solutions to Make Your Testing Easy.