

# Engine-Mounted Torsionally Resilient Coupling

## Overview

The Power Test Engine-Mounted Torsionally Resilient Coupling is used to provide dampening of high-amplitude torsional vibration during engine testing.

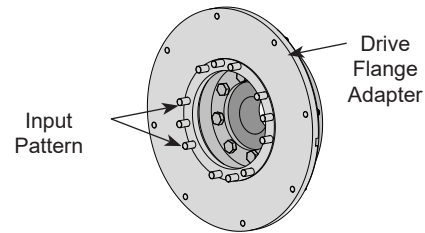
EMTR Couplings:

- Dampens torque spikes and damaging harmonics.
- Extends service life of dynamometer and driveline components.
- Are supplied with SAE Drive Flange adapter plate shown in chart below to adapt to engine crankshaft adapter (*sold separately*).
- Coupling can be direct-mounted to flywheel by removing Drive Flange adapter plate and bolting directly to flywheel pattern listed in chart below.

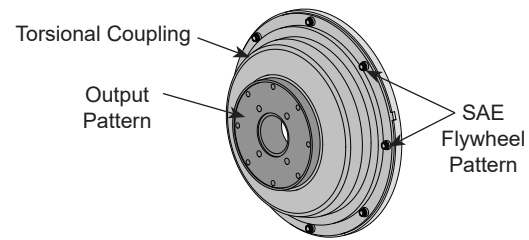
The Power Test Engine-Mounted Torsionally Resilient Coupling are intended to mount to the Engine Crankshaft Adapter (*purchased separately*) already attached to the engine's crankshaft/flywheel.



43789.x Torsionally Resilient Coupling shown



Rear View



Front View

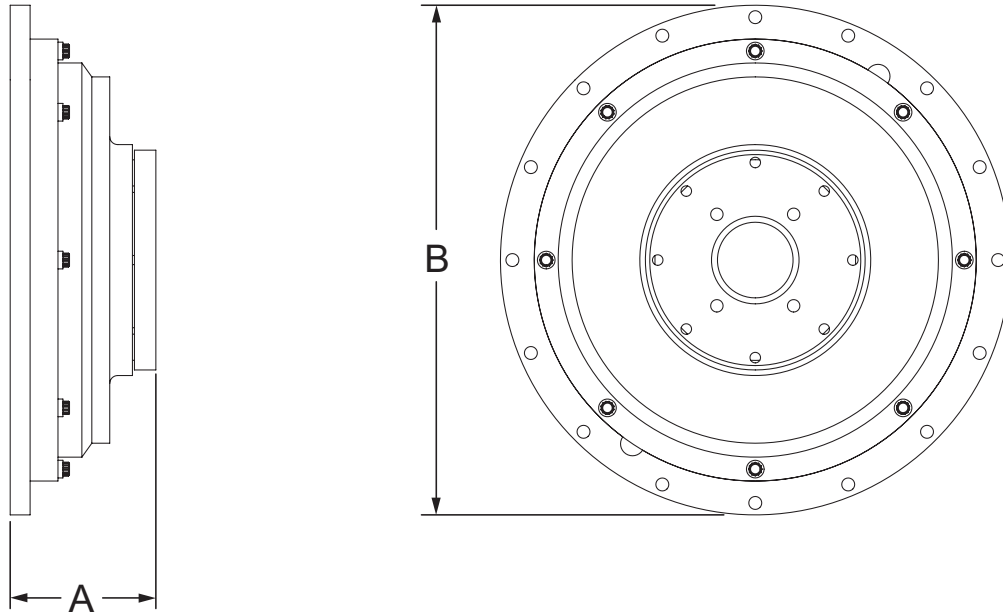
Description	Assm. Part #	Adapts From Drive Flange	Adapts To SAE Flywheel Pattern	Drive Shaft	*Max Torque ft-lbs (Nm)	Max RPM	Weight lbs (kg)
EMTR Coupling	43937.1	1610	J620 - 8"	1410	288 (391)	4,500	31 (14)
EMTR Coupling	43937.2	1810	J620 - 8"	1410	288 (391)	4,500	31 (14)
EMTR Coupling	43937.3	1410	J620 - 8"	1410	288 (391)	4,500	31 (14)
EMTR Coupling	43789.1	1810	J620 - 11 1/2"	1410 / 1610	810 (1098)	3,600	64 (29)
EMTR Coupling	43789.2	1610	J620 - 11 1/2"	1410 / 1610	810 (1098)	3,600	63 (28)
EMTR Coupling	43789.3	1710	J620 - 11 1/2"	1410 / 1610	810 (1098)	3,600	63 (28)
EMTR Coupling	43789.4	SAE 11 1/2 J620	J620 - 11 1/2"	1410 / 1610	810 (1098)	3,600	64 (29)
EMTR Coupling	44297.1	1810	J620 - 11 1/2"	1610	1549 (2100)	3,600	98 (44)
EMTR Coupling	44297.2	1610	J620 - 11 1/2"	1610	1549 (2100)	3,600	99 (45)
EMTR Coupling	44297.3	1710	J620 - 11 1/2"	1610	1549 (2100)	3,600	98 (44)
EMTR Coupling	44297.4	Cummins 525	J620 - 11 1/2"	1610	1549 (2100)	3,600	97 (43)
EMTR Coupling	44195.1	1810	J1857 - 15 1/2" / J620 - 14"	1610	2212 (3000)	3,000	105 (48)
EMTR Coupling	44195.2	1810	J1857 - 15 1/2" / J620 - 14"	1810	2212 (3000)	3,000	105 (48)

\*Engine and dynamometer combination may affect maximum torque rating, verify order with your Power Test representative.



N60 W22700 Silver Spring Drive • Sussex, WI 53089 USA  
 phone: (262) 252-4301 • fax: (262) 246-0436  
[www.powertestdyno.com](http://www.powertestdyno.com)

# Engine-Mounted Torsionally Resilient Coupling



Description	*Part #	Dimensions (inches)	
		A	B
EMTR Coupling	43937.x	2 11/16	Ø 10 5/8
EMTR Coupling	43789.x	4	Ø 14 1/8
EMTR Coupling	44297.x	4 1/2	Ø 14 1/8
EMTR Coupling	44195.x	5 1/4	Ø 18 1/16

\* NOTE: The ".x" at the end of part number above is replaced with actual part number shown in chart on page 1, for example 43937.1 or equivalent.

Description	Part #	Dimensions (mm)	
		A	B
EMTR Coupling	43937.x	68	Ø 270
EMTR Coupling	43789.x	102	Ø 359
EMTR Coupling	44297.x	114	Ø 359
EMTR Coupling	44195.x	133	Ø 459

\* NOTE: The ".x" at the end of part number above is replaced with actual part number shown in chart on page 1, for example 43937.1 or equivalent.