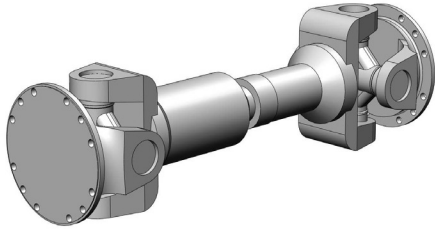


Double Universal Drive Shafts - X-Series



43087 1810 Drive Shaft shown

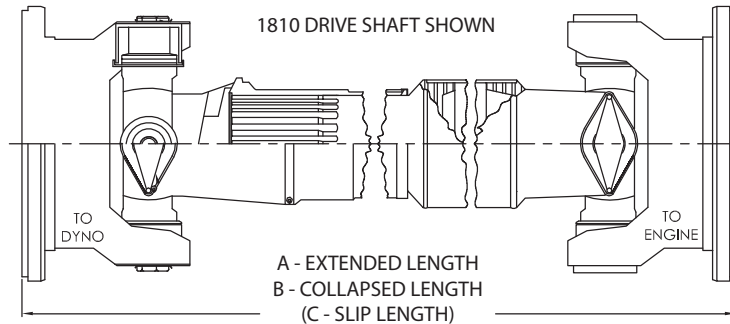
Overview

The Power Test Drive Shaft is used to connect an engine to the dynamometer. A single drive shaft can accommodate a wide range of engine displacements.

Drive Shafts:

- Feature adjustable lengths to allow for varying depths of engine flywheels
- Allow for parallel misalignment between the engine and the dynamometer
- Are available in a variety of capacities

Dynamically-balanced Power Test Universal-Joint (Cardan shaft) Drive Shafts use commonly available components including cross and bearing assemblies and flanges for easy servicing when needed.



Description	Part #	Dimensions - inches (mm)			Max Torque* ft-lbs (Nm)	Max RPM*	Weight lbs (kg)
		A	B	C			
1410 Drive Shaft	43938	24 3/8 (620)	21 1/2 (546)	2 7/8 (74)	1,500 (2034)	5,000	16 (7)
1610 Drive Shaft	43694	24 3/8 (620)	21 1/2 (546)	2 7/8 (74)	3,650 (4949)	4,500	46 (21)
1610 Drive Shaft	43217	31 1/2 (800)	27 (686)	4 1/2 (115)	3,650 (4949)	4,500	49 (23)
1810 Drive Shaft	43087	31 5/8 (804)	28 1/4 (718)	3 3/8 (86)	6,500 (8813)	4,500	101 (46)
1910-12K Drive Shaft	43259	37 1/2 (953)	32 (813)	5 1/2 (140)	12,000 (16270)	2,500	166 (76)
1910-18K Drive Shaft	43784	35 1/2 (902)	31 1/2 (800)	4 (102)	18,000 (24405)	2,500	200 (91)

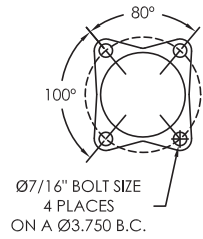
* Speed and torque ratings are short duration only and are for properly installed new drive shafts.



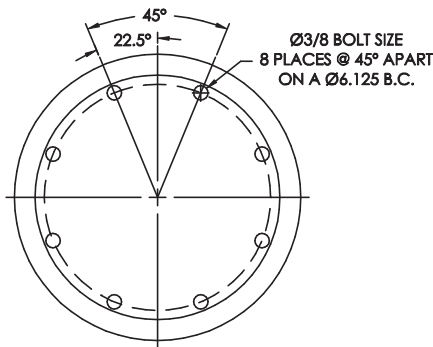
N60 W22700 Silver Spring Drive • Sussex, WI 53089 USA
 phone: (262) 252-4301 • fax: (262) 246-0436
www.PowerTestDyno.com

X-Series Drive Shafts

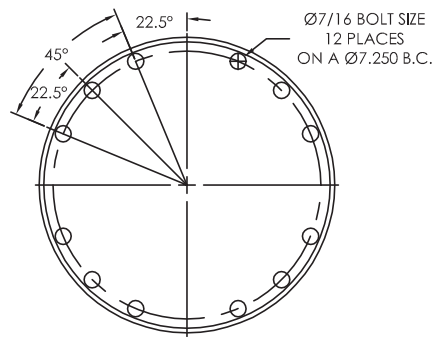
1410 Drive Shaft



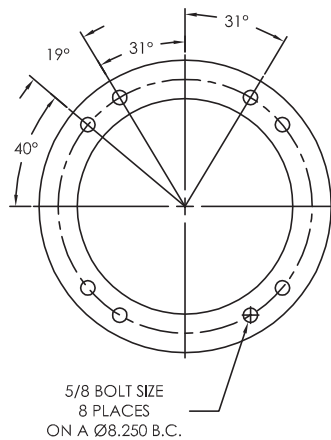
1610 Drive Shaft



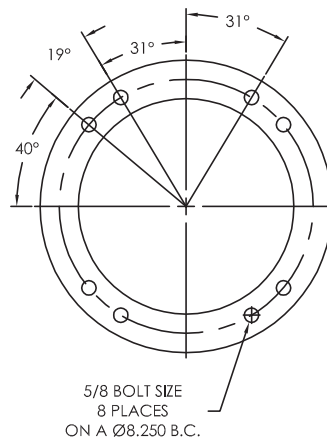
1810 Drive Shaft



1910-12K Drive Shaft



1910-18K Drive Shaft



▲ **WARNING!**

At no time should the dynamometer be operated without a proper drive shaft guard securely fastened in place.

▲ **WARNING!**

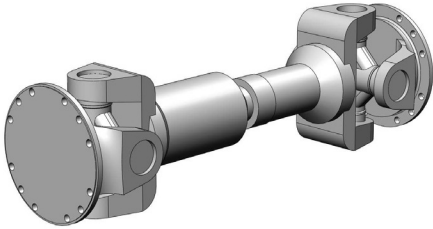
All personnel should be kept clear of the area and should not be in the test cell during testing.

X-Series Drive Shafts

Description	Part #	Mounting Bolts Size	**Bolt Torque Ft-Lbs (Nm)	Bolt Qty.
1350 Drive Shaft	28240	7/16	70 (95)	8
1410 Drive Shaft	43938	7/16	70 (95)	8
1610 Drive Shaft	43694	3/8	45 (61)	16
1610 Drive Shaft	43217	3/8	45 (61)	16
1810 Drive Shaft	43087	7/16	70 (95)	24
1910-12K Drive Shaft	43259	5/8	220 (298)	16
1910-12K Drive Shaft	44202	5/8	220 (298)	16

** Torque values are for dry threads, reduce by 20% for lubricated threads.

Double Universal Drive Shafts - H36-Series



44048 315 DIN Drive Shaft shown

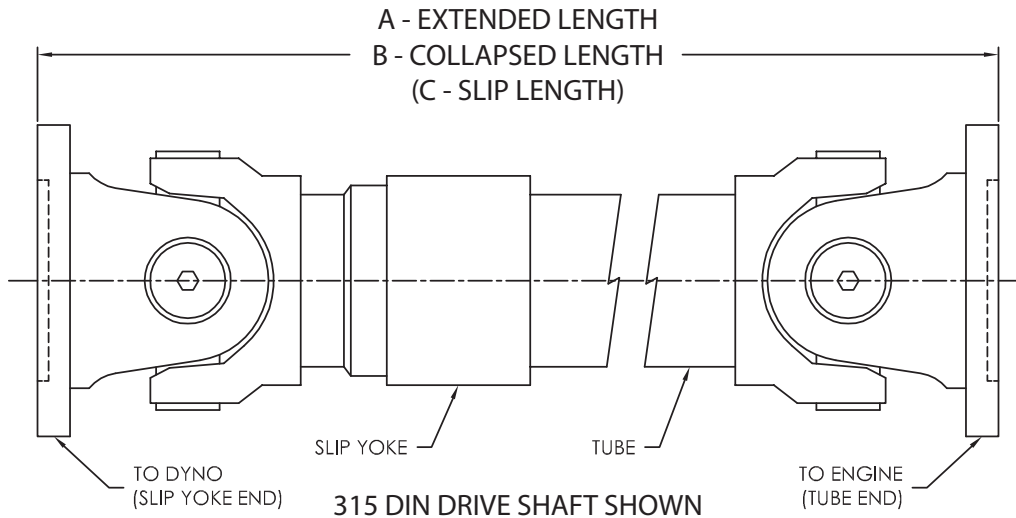
Overview

A Power Test Drive Shaft is used to connect an engine to the dynamometer. A single drive shaft can accommodate a wide range of engine displacements.

Power Test Drive Shafts:

- Feature adjustable lengths to allow for varying depths of engine flywheels
- Allow for parallel misalignment between the engine and the dynamometer
- Are available in a variety of capacities

Dynamically balanced Power Test universal-joint (Cardan shaft) drive shafts use commonly available components including cross and bearing assemblies and flanges for easy servicing when needed.



Description	Part #	Dimensions - inches (mm)			Max Torque* ft-lbs (Nm)	Max RPM*	Weight lbs (kg)
		A	B	C			
1910-12K Drive Shaft	44202	50 3/4 (1290)	45 1/4 (1150)	5 1/2 (140)	12,000 (16270)	2,500	230 (105)
315 DIN Drive Shaft	1013062	50 3/4 (1290)	45 7/16 (1154)	5 5/16 (135)	50,000 (67790)	2,500	520 (236)
350 DIN Drive Shaft	1025547	53 1/2 (1359)	49 1/2 (1257)	4 (101)	55,000 (74570)	2,500	775 (351)

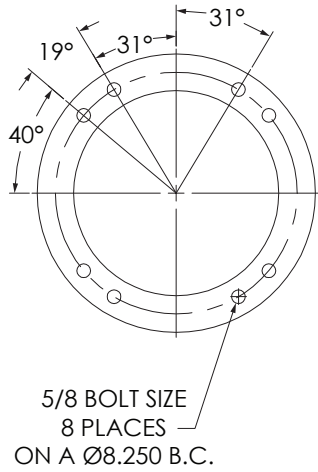
* Speed and torque ratings are short duration only and are for properly installed new drive shafts.



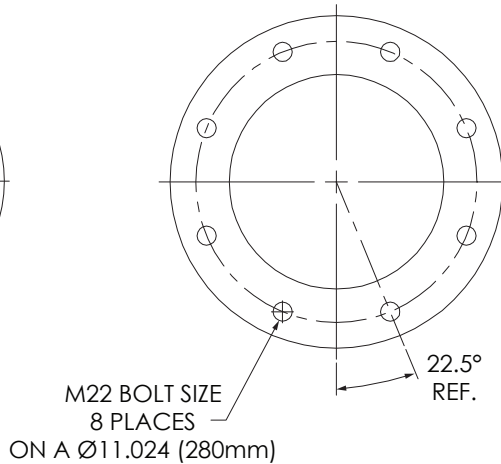
N60 W22700 Silver Spring Drive • Sussex, WI 53089 USA
phone: (262) 252-4301 • fax: (262) 246-0436
www.PowerTestDyno.com

H36-Series Drive Shafts

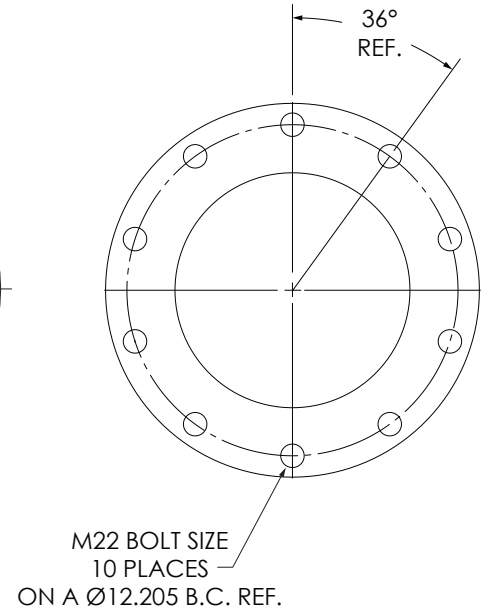
1910-12K Drive Shaft



315 DIN Drive Shaft



350 DIN Drive Shaft



⚠ WARNING!

At no time should the dynamometer be operated without a proper drive shaft guard securely fastened in place.

⚠ WARNING!

All personnel should be kept clear of the area and should not be in the test cell during testing.

Description	Part #	Mounting Bolts Size	**Bolt Torque Ft-Lbs. (Nm)	Bolt Qty.
1910-12K Drive Shaft	44202	5/8	220 (298)	16
315 DIN Drive Shaft	1013062	M22	600 (813)	16
350 DIN Drive Shaft	1025547	M22	600 (813)	20

** Torque values are for dry threads, reduce by 20% for lubricated threads.