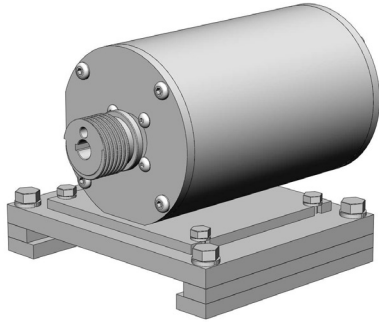


Smart Throttle Actuator System



43843.3 Throttle Actuator shown

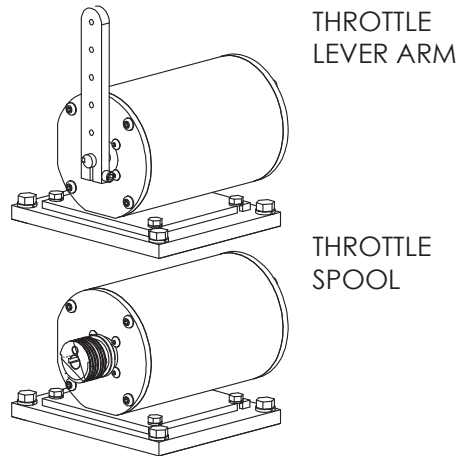
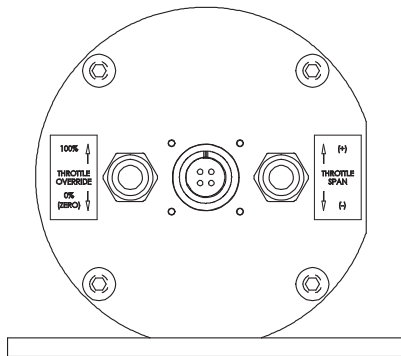
Overview

The Power Test Electronic Smart Throttle Actuator enables precision speed control on mechanically fueled engines and helps automate engine testing.

The Electronic Throttle Actuator:

- Can be configured for “push” or “pull” usage
- Allows for quick adjustments and calibrations made in test cell
- Can be mounted to the dynamometer actuator support bracket or an engine cart or stand
- Is supplied with a throttle lever arm and throttle spool

The Power Test Electronic Throttle Actuator is designed for use with PowerNet data acquisition and control systems and can be used with control systems providing an analog output signal of 0-20mA.



Description	Part #	Electric Motor Type	Max Torque (in-lbs)	Weight (lbs)
Smart Rotary Throttle w/linkage - Spool	43843.1	24V DC Gear Head Stepper	18.75	20
Smart Rotary Throttle w/linkage - Arm	43843.2			
Smart Rotary Throttle w/linkage - Spool & Arm	43843.3			



N60 W22700 Silver Spring Drive • Sussex, WI 53089 USA
 phone: (262) 252-4301 • fax: (262) 246-0436
www.pwrtst.com