

# SERVICE ADVANTAGE

## Industry Leading Customer Service

### How we continually make it better



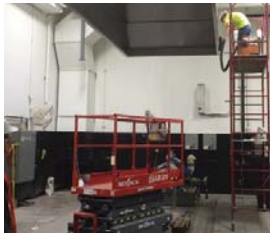
#### Technical Services

- On-site commissioning, training, and service
- Part replacement
  - New, Used, & Custom
- Phone & email support



#### Dynamometer Remanufacturing Services

- In-house rebuilds & production
- Quality control
- Vintage part shipment



#### Design, Construction and Installation Services (DCI)

- Room layout design
- Dynamometer recommendations
- Construction & installation management



#### Software and Programming Services

- Sensor additions
- Custom data displays
- Program writing
- Equipment control integration
- Custom-built controls

### Ongoing Partnership

At Power Test, we are committed to becoming your long-term partner. Whether you need to repair your existing dyno or build a complete test cell, we provide unsurpassed service.

### Exceptional Customer Response

Power Test has a plan in place to ensure your equipment is serviced quickly and effectively. If your equipment is down, we respond immediately to get you up and running. For everyday customer support, our team guarantees a response within one business day.

*“The right thing to do is always the right thing to do.”*

Power Test provides world class support with a team of highly trained, knowledgeable technicians who travel the globe. As your partner, we are honest and straightforward about our progress with your projects and we work with you until the job is done.

**For more information go to [pwrst.com](http://pwrst.com)**