

DPM BASIC INSTRUMENTATION



DataLogger DPM3 Software shown with Optional Computer

DPM BASIC INSTRUMENTATION

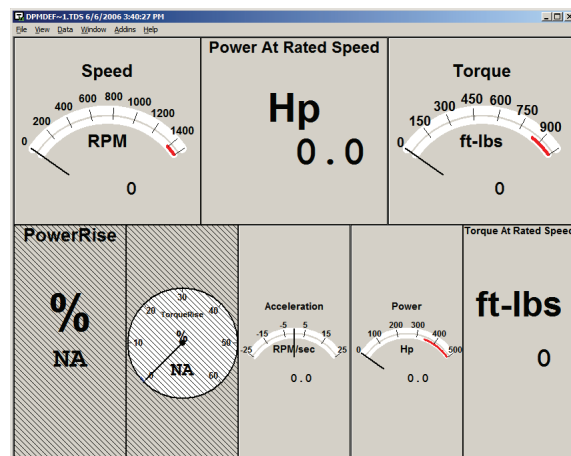
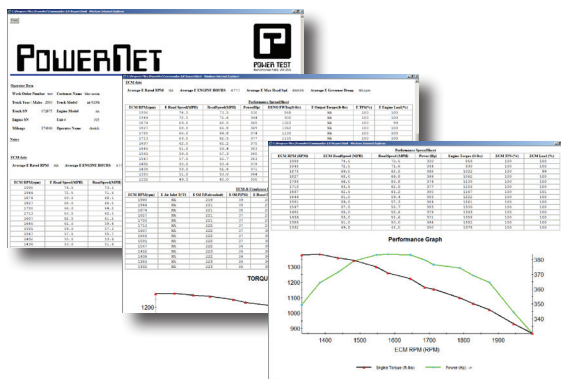


DPM 304 with manual throttle & load control

The DPM 300 series provides the operator with speed, torque and power displays measured directly from the absorber. The data is displayed on large 2.4 inch panels. The DPM is available in four configurations.

DPM 301		Data Only
DPM 302	Designed for AG Dyno	Data and Manual Load
DPM 303	Designed for EMTS Dyno	Data, Speed Limit & Manual Throttle
DPM 304		Data, Manual Throttle & Load Control

DataLogger DPM3 software is now standard with the DPM 300 series. The DataLogger is a Windows-based software program that allows the user to view engine speed, torque and horsepower on screen, "auto-grab" data as often as once per second, and print out simple graphs and spreadsheets.



A Complete Testing Solution

Power Test provides a full range of test cell support equipment and accessories, including engine carts, air start systems, drive shafts, resilient couplings, engine adapters, water recirculation and cooling systems, fuel measurement systems, smoke opacity meters, additional temperature and pressure sensors, and analog input channels. Whether you are dealing with new installation or looking to repair, upgrade, or replace an existing dynamometer, Power Test has a solution.

Power Test, Your Full Service Dynamometer Manufacturer

Power Test can provide facility design and installation of every dynamometer we sell. We also offer a complete line of support equipment, including ventilation systems, exhaust systems, auxiliary cooling systems, and water recirculation systems.

Contact your Power Test representative or visit our web site at www.pwrtst.com for more information.

POWER TEST INCORPORATED
 N60 W22700 SILVER SPRING DRIVE SUSSEX, WI 53089 USA
 phone: (262)252-4301 fax: (262)246-0436
www.pwrtst.com