



AG-Series Dynamometers
www.pwrtst.com



AG-Series Dynamometers

The Power Test AG-Series Eddy Current Agricultural dynamometer system is designed for PTO testing. Now true power, torque, and rpm can be measured without reliance on water. The AG-Series dynamometer system features modern air-cooled eddy current absorbers designed for reliable, portable PTO testing.

Our design results in lower maintenance costs and fewer reliability issues than those associated with agricultural dynamometers that rely on a friction brake or hydraulic pump.

With the included PowerNet DPM Data Logger software, the system displays, graphs, records, and saves rpm, torque, and power. Power Test's AG-Series dynamometer system provides the ultimate in portable dynamometer technology for today's agricultural market.



AG250 Agricultural Dynamometer

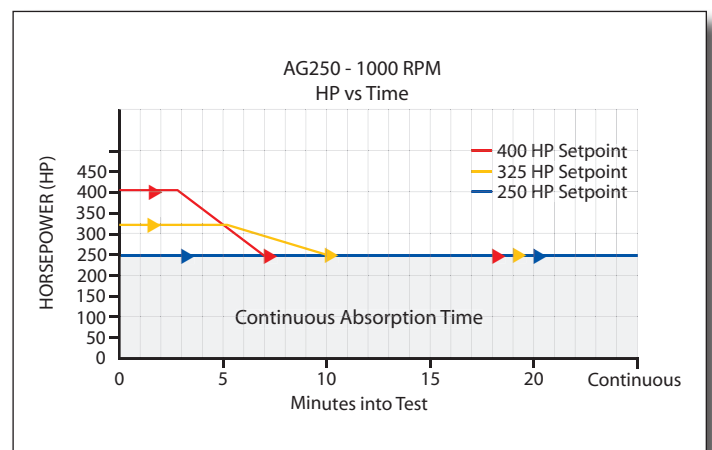
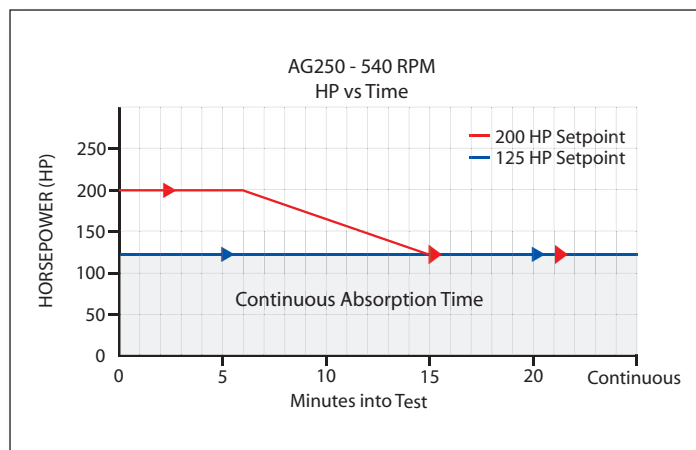
Portable Technology

PTO testing allows a quick, accurate, tangible assessment of the engine's operating condition and allows proof of service improvements. The Power Test AG-Series dynamometer system is supplied complete for performing power verification tests. Offering high absorption capabilities and an easy-to-use digital display, this unit sets the new standard for durability in tractor test equipment.

This system is completely portable and does not rely on an external water supply. The unit arrives ready to use, requiring only a 220 VAC, 30 Amp power source. Provisions have been made to allow convenient generator mounting making this unit completely independent and portable.

In addition to direct engine testing (max. 2,600 rpm), the system offers equal capabilities in either direction of rotation.

- Pre-delivery inspection is made quick and easy.
- Trade-in condition can be proven.
- Allows rapid diagnosis of service issues.
- Proves the effectiveness of services performed.
- Assures the equipment is ready to go to work.
- Easily removed from trailer for stationary installations.
- Convenient generator mounting location.
- Internal drive shaft and adaptor storage.



AG-Series Specifications

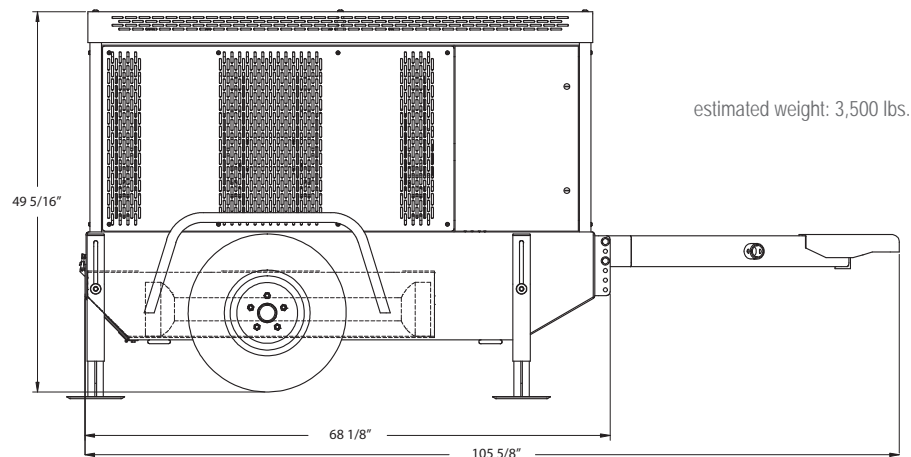
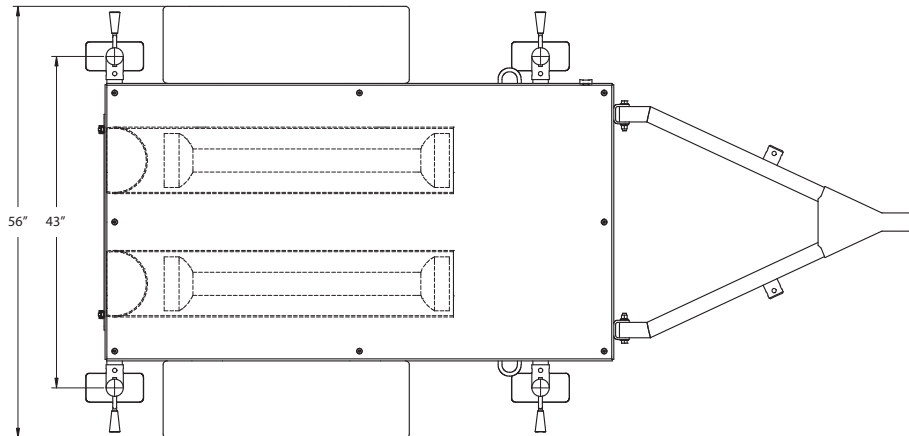
- Eddy-current dynamometer.
- Removable tongue assembly.
- 1 $\frac{3}{4}$ " 20 spline input drive shaft.
- 1 $\frac{1}{8}$ " 21 spline input drive shaft.
- 1 $\frac{3}{8}$ " 6 spline to 1 $\frac{3}{8}$ " 21 spline shaft adaptor.
- Wheel chocks.
- Digital Power Meter (DPM) with remote load control.
- DPM Data Logger software.

Utilities Required

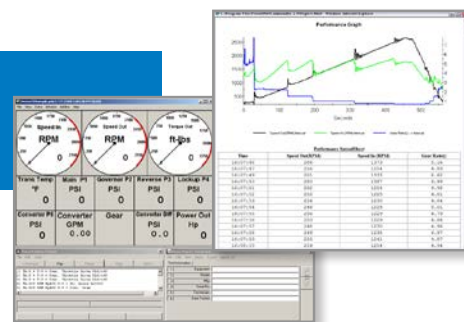
- 220-240 VAC single-phase, 30 amps.

Optional Accessories

- PowerNet LT Data Acquisition featuring:
 - Fully automated testing.
 - Closed-loop control.
 - Temperature/Pressure/Auxiliary Inputs.
 - ECM Interface.



PowerNet LT Data Acquisition and Control System is available.



PowerNet LT Data Acquisition and Control System

PowerNet LT features a condensed version of our PowerNet software. The system is comprised of the Commander Computer, a modified desktop PC or laptop computer, and the LT Control Enclosure, a rugged industrial enclosure. Communication between components is accomplished through an Ethernet cable, providing rapid data transfer speeds, wiring simplicity, and LAN connections.

The system uses a Windows®-based software package to provide consistent, automated test results. PowerNet LT allows either manually or automatically controlled operation, warm-up, break-in, and power tests.

PowerNet LT's ability to run automatically at predetermined speeds and loads allows the operator to step effortlessly through all testing operations. Automatic mode gives the operator a choice between running a pre-configured test pattern or entering direct numeric setpoints for speed, torque, or power. Manual control is achieved through the use of slider bars. This system gives the operator a quick, effective, and accurate means of controlling test conditions, while providing rapid feedback in an easy-to-comprehend visual format. Accurate test results can be obtained regardless of the operator's skill level.



Power Test, A Complete Testing Solution

Power Test provides a full range of test cell support equipment and accessories, including engine carts, air start systems, drive shafts, resilient couplings, engine adapters, water recirculation and cooling systems, fuel measurement systems, smoke opacity meters, additional temperature and pressure sensors, and analog input channels. Whether you are dealing with new installation or looking to repair, upgrade, or replace an existing dynamometer, Power Test has a solution.

Contact your Power Test representative or visit our web site at www.pwrtst.com for more information.

Power Test Incorporated
N60 W22700 Silver Spring Drive
Sussex, WI 53089 USA
262-252-4301
www.pwrtst.com